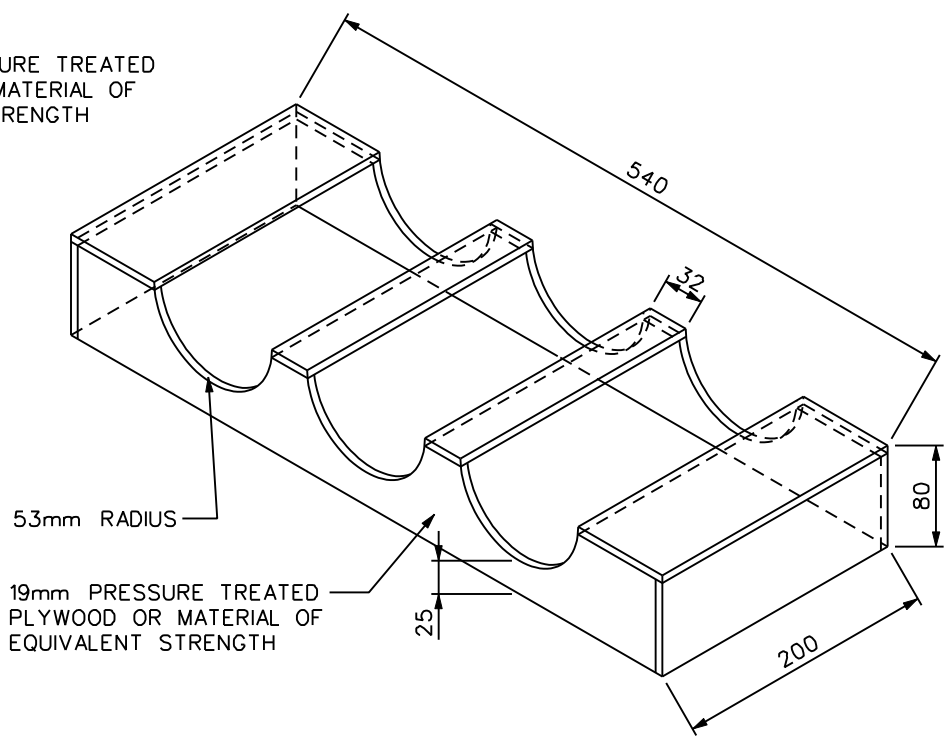
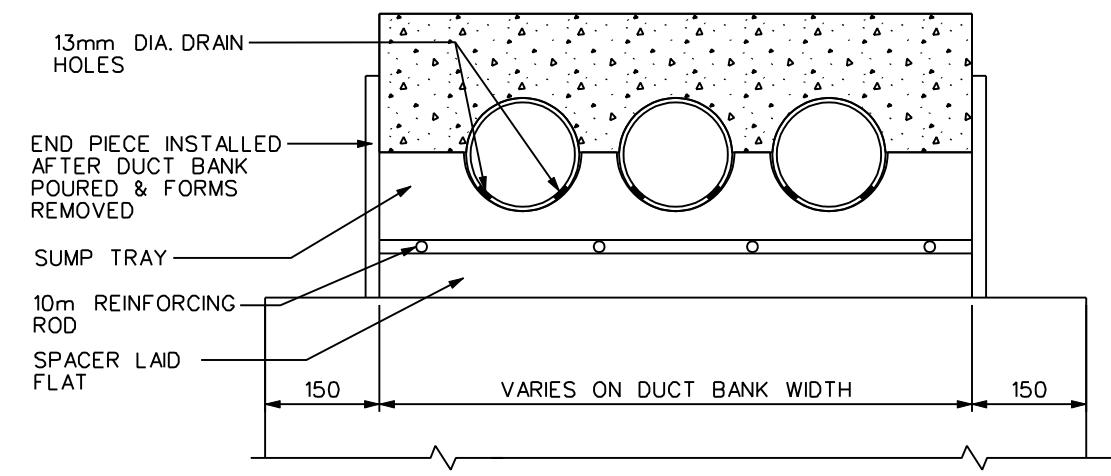


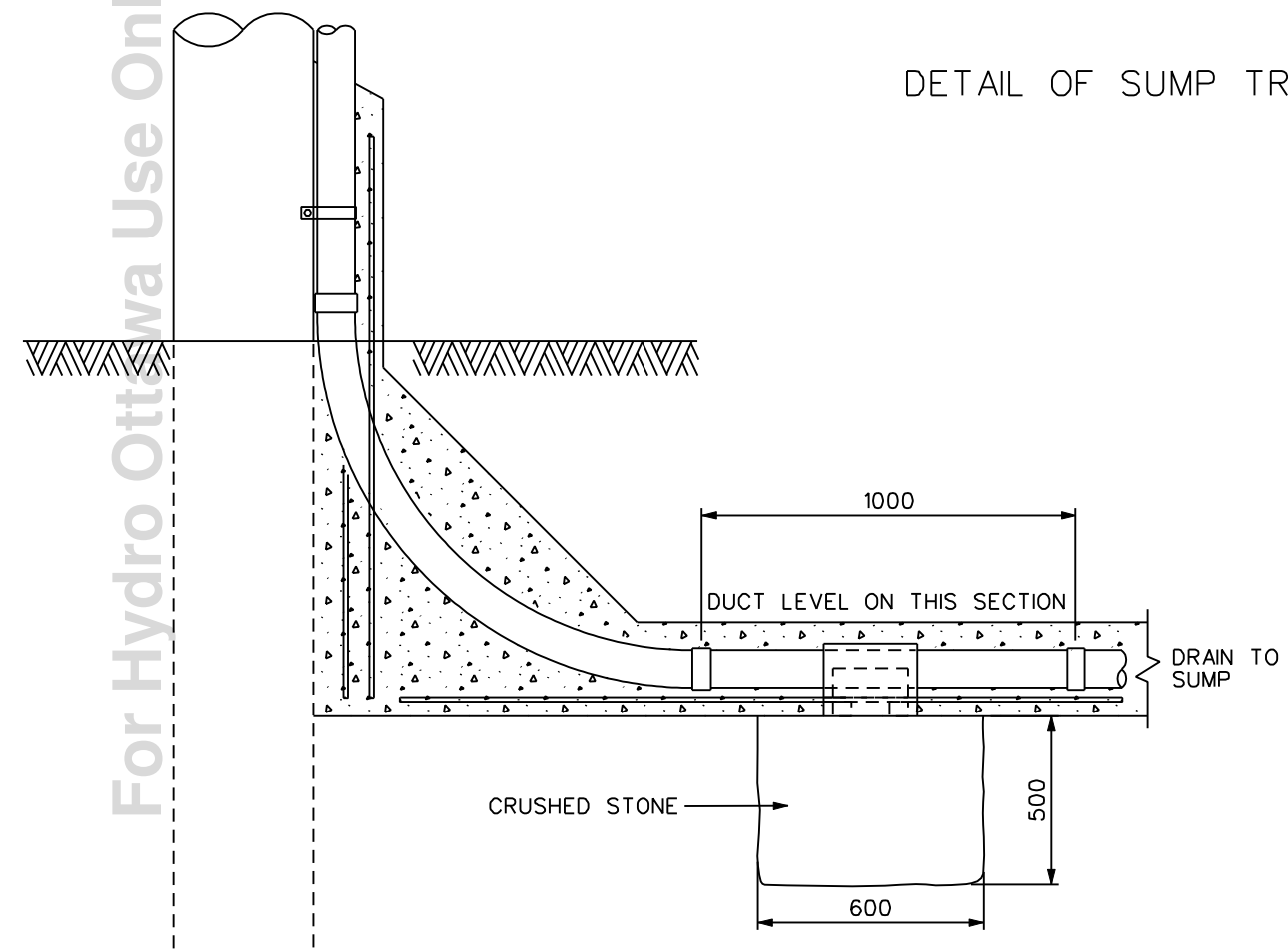
DETAIL OF END PIECE



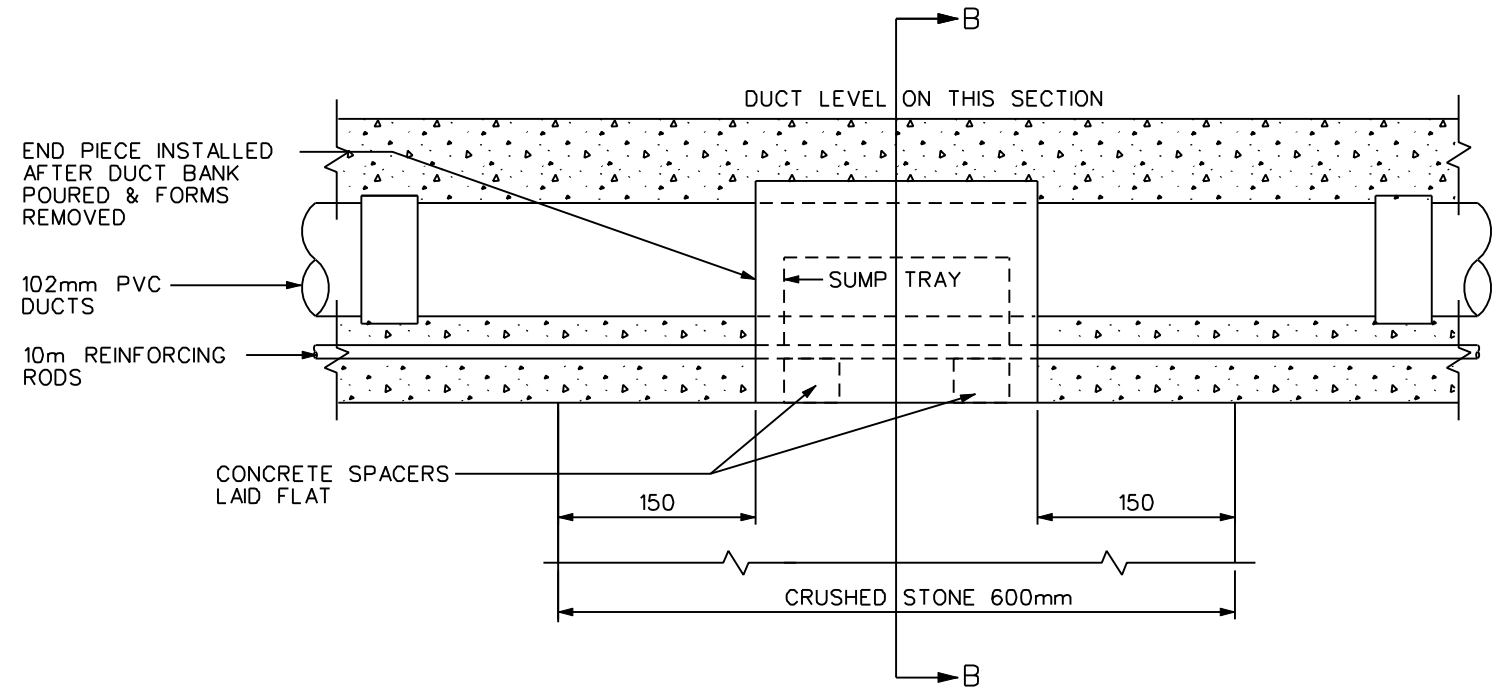
DETAIL OF SUMP TRAY




SECTION B-B



TYPICAL INSTALLATION OF SUMP TRAY IN POLE LATERAL



SIDE VIEW OF INSTALLATION OF SUMP TRAYS FORMATION

REVISIONS				PREP	CHKD	APPD	 www.hydro-ottawa.com	TITLE		
REV: 1	DATE: 2002-07-04	CHANGE: REDRAW USING CADD	FBG	PL	CSM			ENGINEERING SPECIFICATION DUCT POLE LATERAL SUMP TRAY CONSTRUCTION DETAIL	NO:	UDS0010
REV: 2	DATE: 2010-05-18	CHANGE: TITLE CHANGE	FB	RW	CSM					
REV:	DATE:	CHANGE:								
PREP: F. BOLO CHKD: C. PROULX APPD: C. MALONE DATE: 2002-05-08 SCALE: N.T.S. @ ANSIB								1	REV: 2	
								OF	1	