



POLE ATTACHMENTS FIELD CONSIDERATIONS

ONTARIO ENERGY BOARD

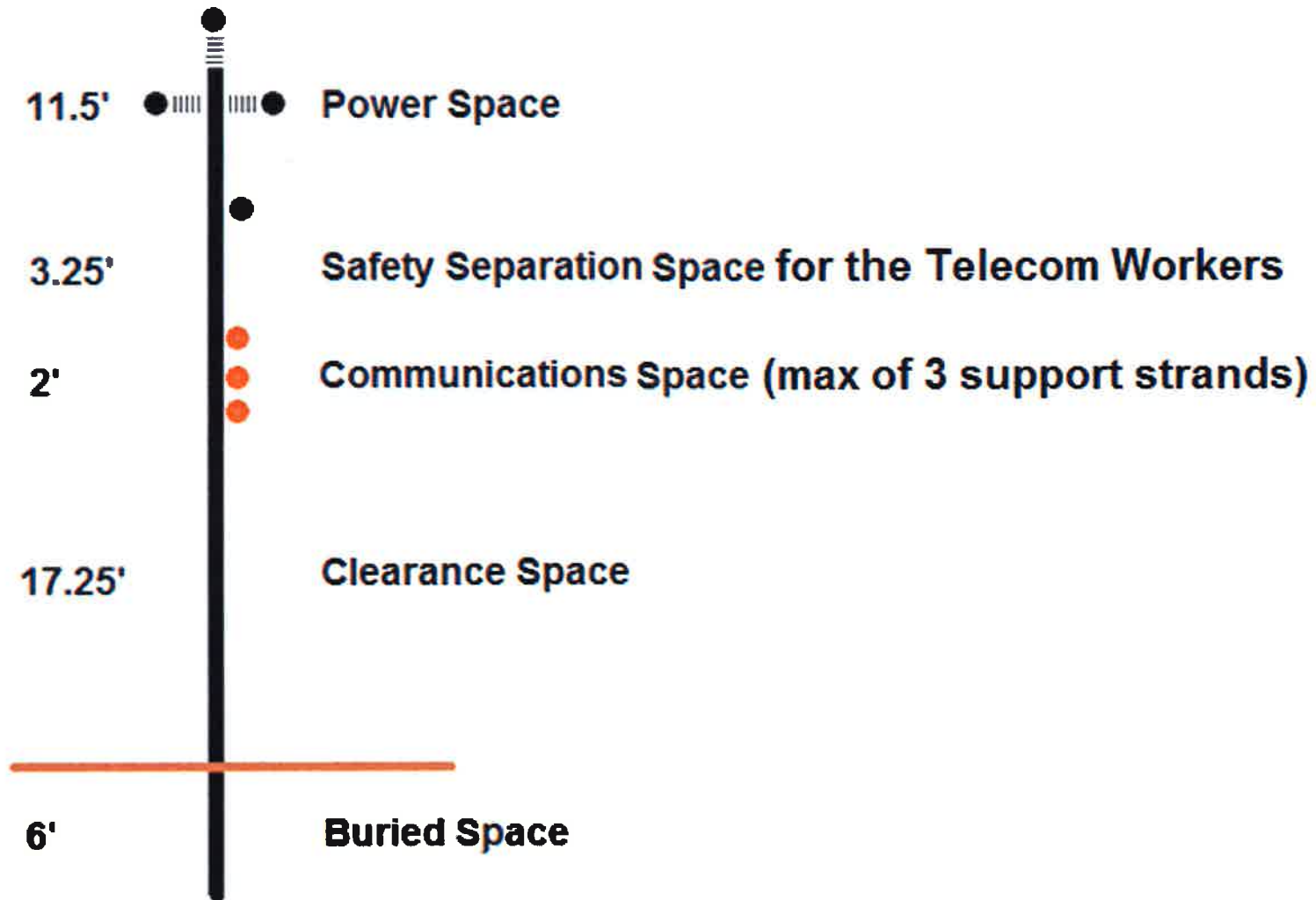
IN THE MATTER OF the *Ontario Energy Board Act, 1998*, S.O. 1998, c. 15, Schedule B;

AND IN THE MATTER OF an Application by Hydro Ottawa Limited for an Order approving rates and other service charges for the distribution of electricity for the years 2016 through 2020.

CONTENT

- ANATOMY OF A 40' POWER POLE
- TECHNICAL SAFETY
- FIELD IDENTIFICATION
- TELECOM ATTACHMENTS - ILLUSTRATIONS
- FIELD ACTIVITIES

Anatomy of a 40' Power Pole



TECHNICAL SAFETY

- Ontario Regulation 22/04 defines the safety requirements with and around electrical distribution systems
- Main physical criteria for safety are:
 - Clearance
 - Strength
 - Grounding
- The LDC is ultimately responsible to ensure the attachers comply with these requirements

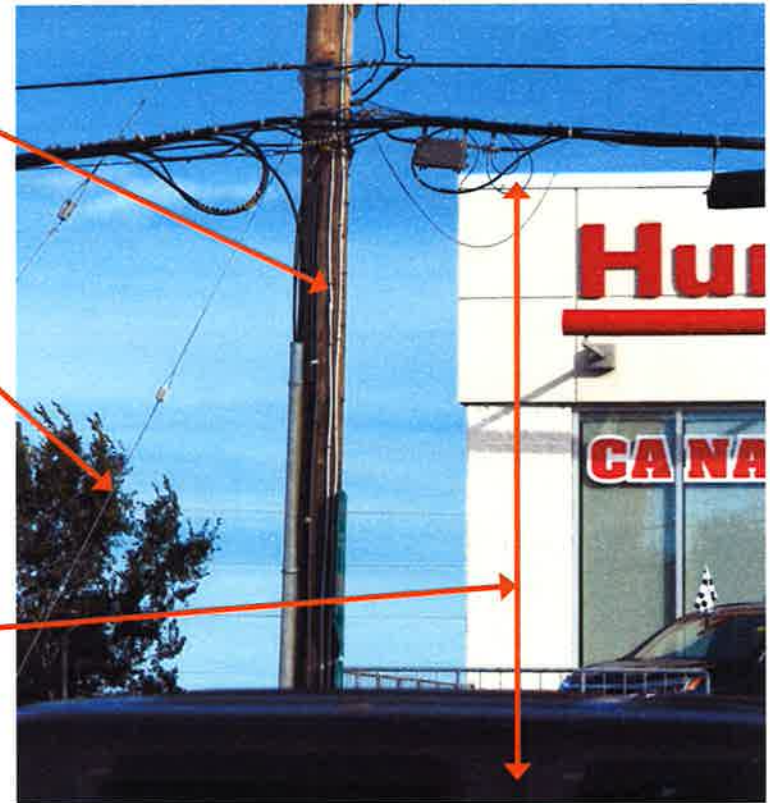


TECHNICAL SAFETY TELECOM APPLICATION ON POLES

SUPPORT STRAND
REQUIRES GROUNDING



STRENGTH
FROM POLE,
ANCHORING,
AND HARDWARE



CLEARANCE
FROM THE
PUBLIC AND
TRAFFIC AS PER
CSA 22.3 NO.1

FIELD IDENTIFICATION

Allstream



24/7 Contact: 1-800-837-6448

AT & T Unitel



****Sold to ALLSTREAM****

Rogers



****Maclean Hunter sold to ROGERS****

24/7 Contact: 1-866-724-4645

Telus



24/7 Contact:
1-800-887-1221 Telus NSO Technical Support

Atria



24/7 Contact: 1-888-623-0623

****Sold to ROGERS****

Bell Canada



24/7 Contact: 1-800-400-2255

Telecom Ottawa



****Sold to ATRIA, now ROGERS****

Videotron Telecom



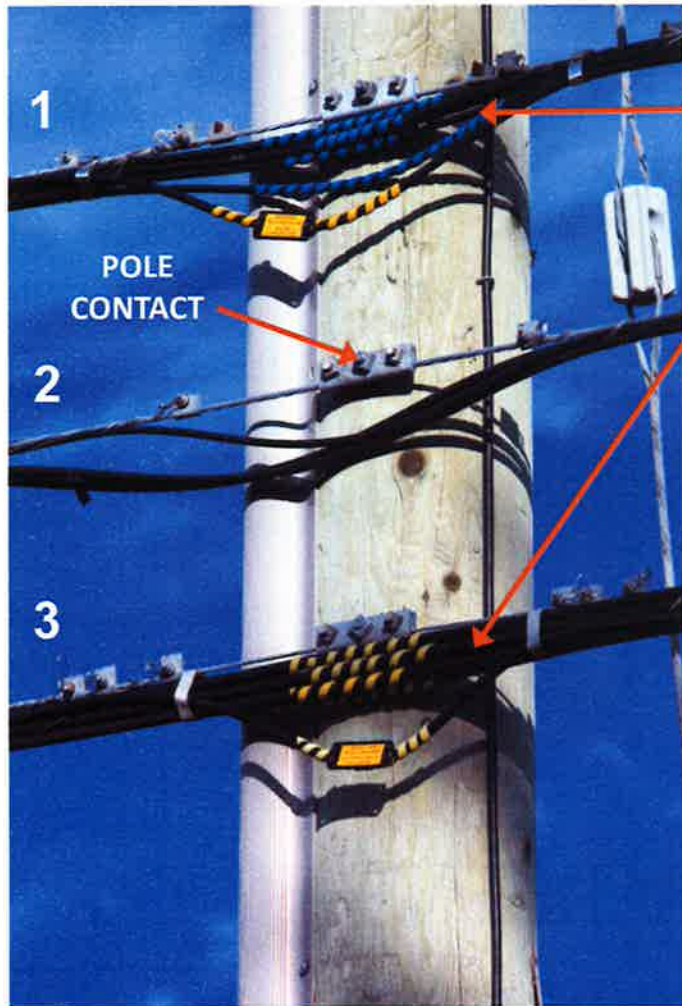
24/7 Contact: 1-800-361-2727

Total number of current telecom attachers @ OEB rate = 43,543

Total number of current telecom attachments = 78,688

Note – there are an additional 13,265 Streetlight attachments @ OEB rate

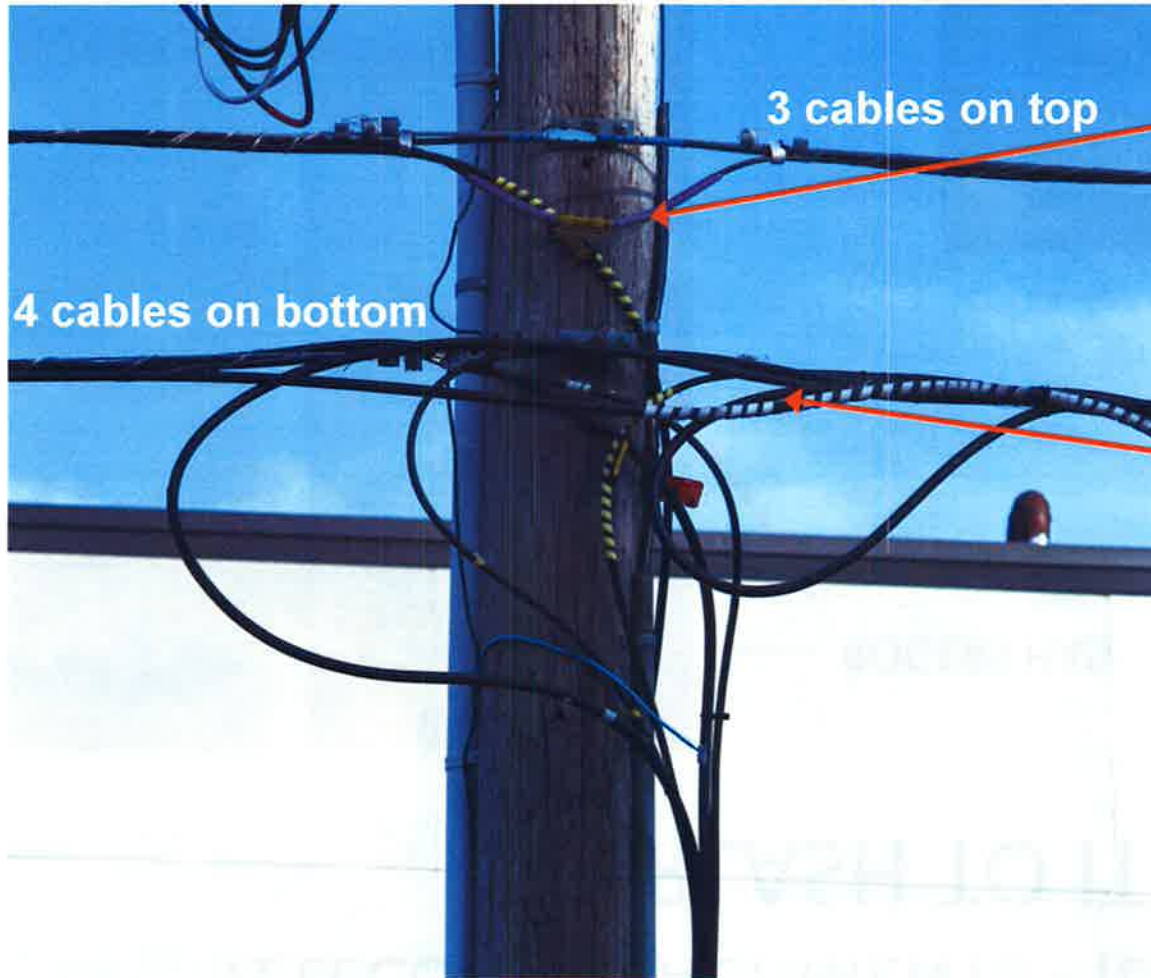
TELECOM ATTACHMENTS - ILLUSTRATIONS OVERLASH TO ITSELF



ROGERS HAS: 10 CABLE ATTACHMENTS ON
2 SUPPORT STRANDS AND
1 ANNUAL ATTACHER PAYMENT



TELECOM ATTACHMENTS - ILLUSTRATIONS OVERLASH TO 3RD PARTIES

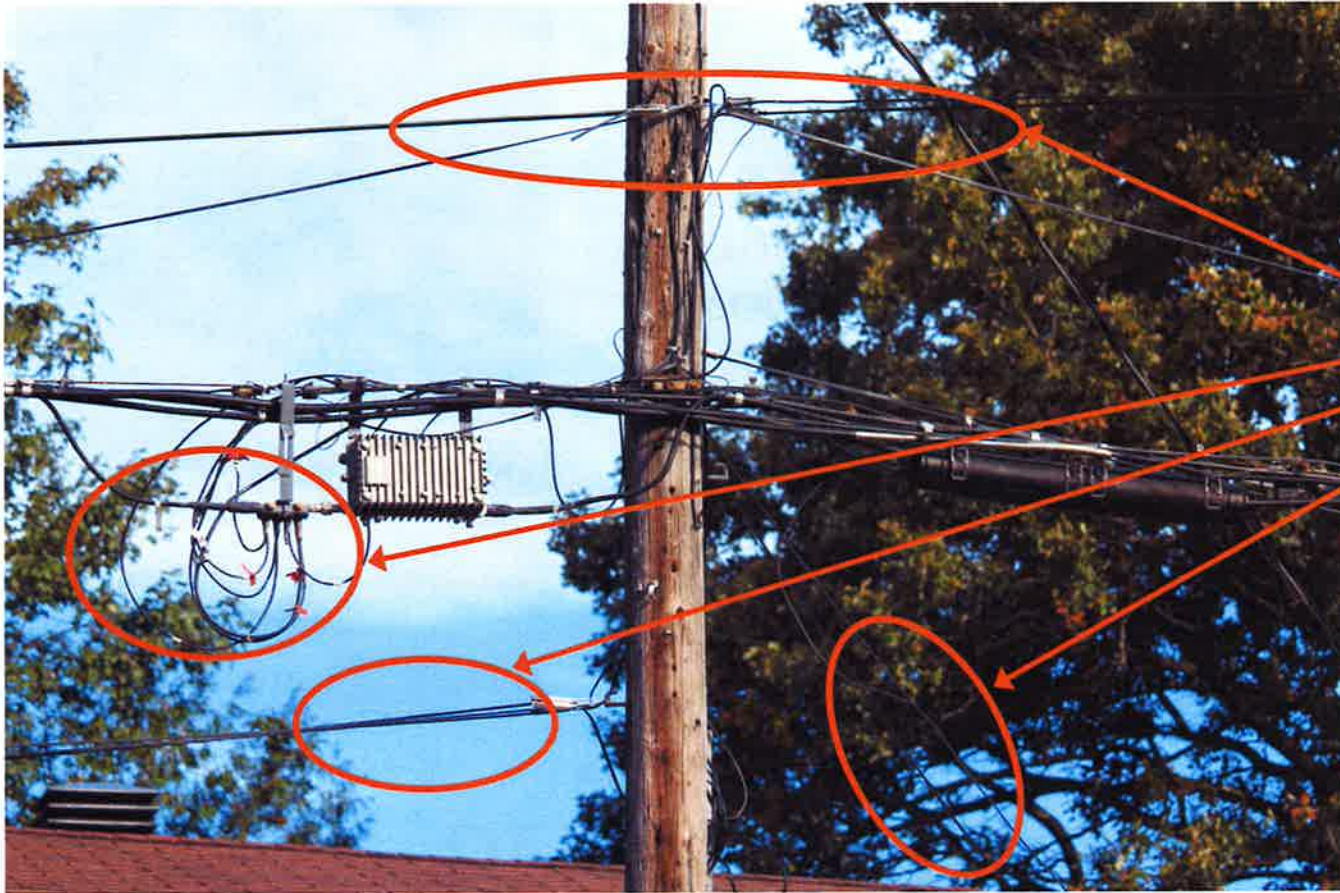


TELUS OVERLASHED TO
ROGERS' UPPER
SUPPORT STRAND

ALLSTREAM
OVERLASHED TO
ROGERS' LOWER
SUPPORT STRAND

3 ATTACHERS HAVE
7 CABLE ATTACHMENTS AND
CABLE DIPS DOWN THE
POLE

TELECOM ATTACHMENTS - ILLUSTRATIONS SERVICE DROPS TO ADJACENT BUILDINGS



TELECOM
SERVICE DROPS
CONNECT
BUILDINGS TO
MAIN NETWORK
CABLES

FIELD ACTIVITIES DELAYED TRANSFERS



TELECOM DELAYED
TRANSFER REQUIRES
POLE OWNER TO
RETURN TO REMOVE
ITS POLE AND
RE-INSTATE



FIELD ACTIVITIES DELAYED TRANSFERS

TYPICAL TIMELINE WITH PLANNED POLE REPLACEMENT

