

FIG. 1
PRIMARY
OVERHEAD
SUPPLY

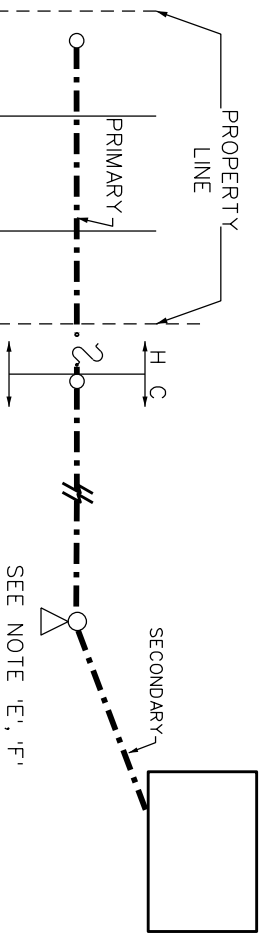


FIG. 2
PRIMARY
UNDERGROUND
RADIAL SUPPLY

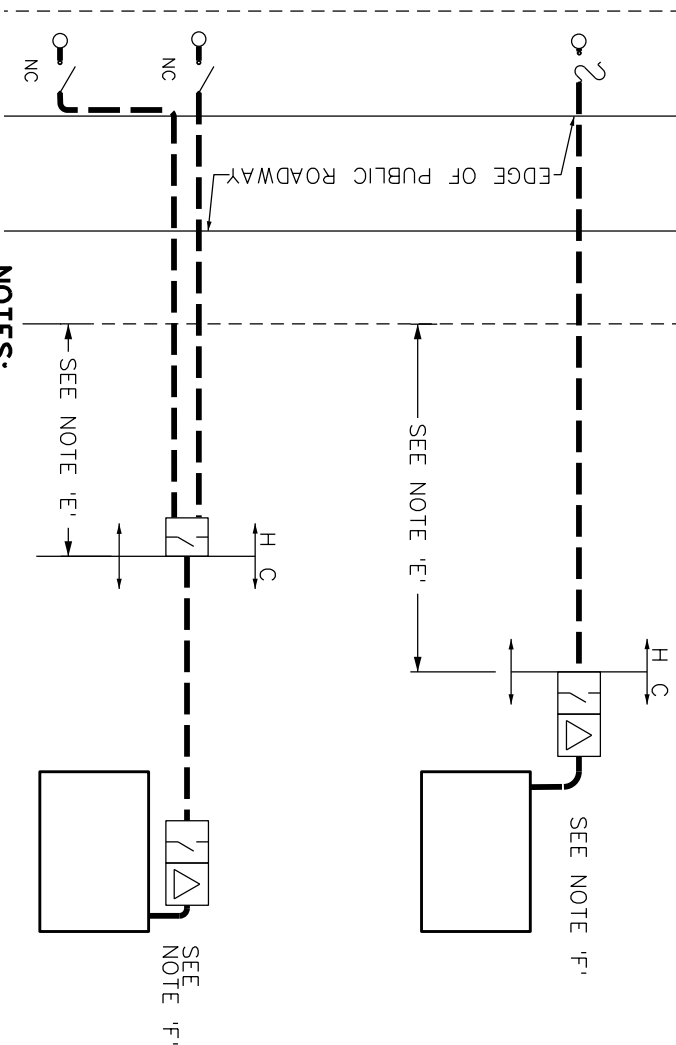


FIG. 3
PRIMARY
UNDERGROUND
TWIN RADIAL
SUPPLY

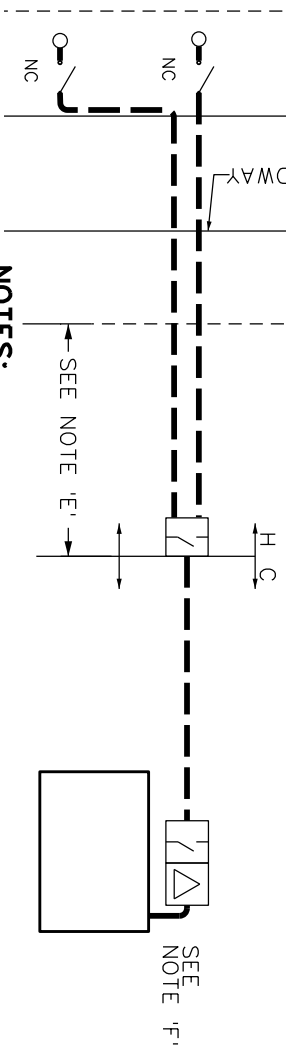


FIG. 4
PRIMARY
UNDERGROUND
HYDRO LOOP
SUPPLY

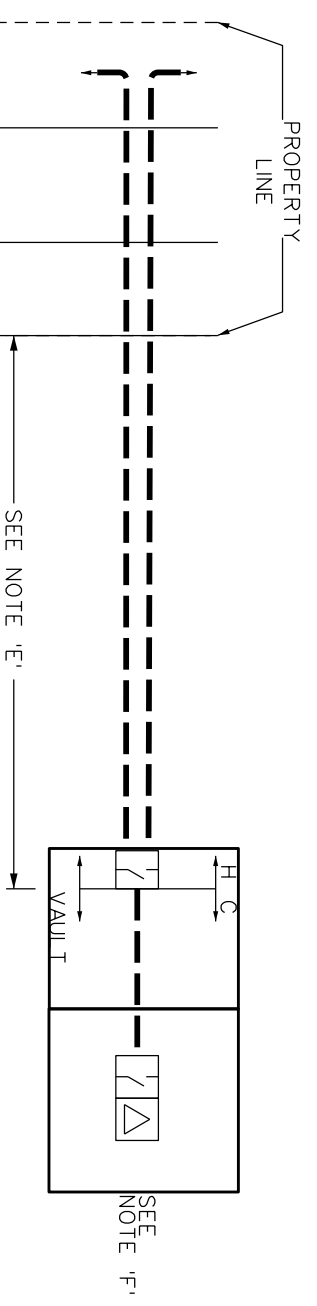


FIG. 5
MULTIPLE
BUILDING
DEVELOPMENT
PRIMARY
UNDERGROUND
LOOP SUPPLY

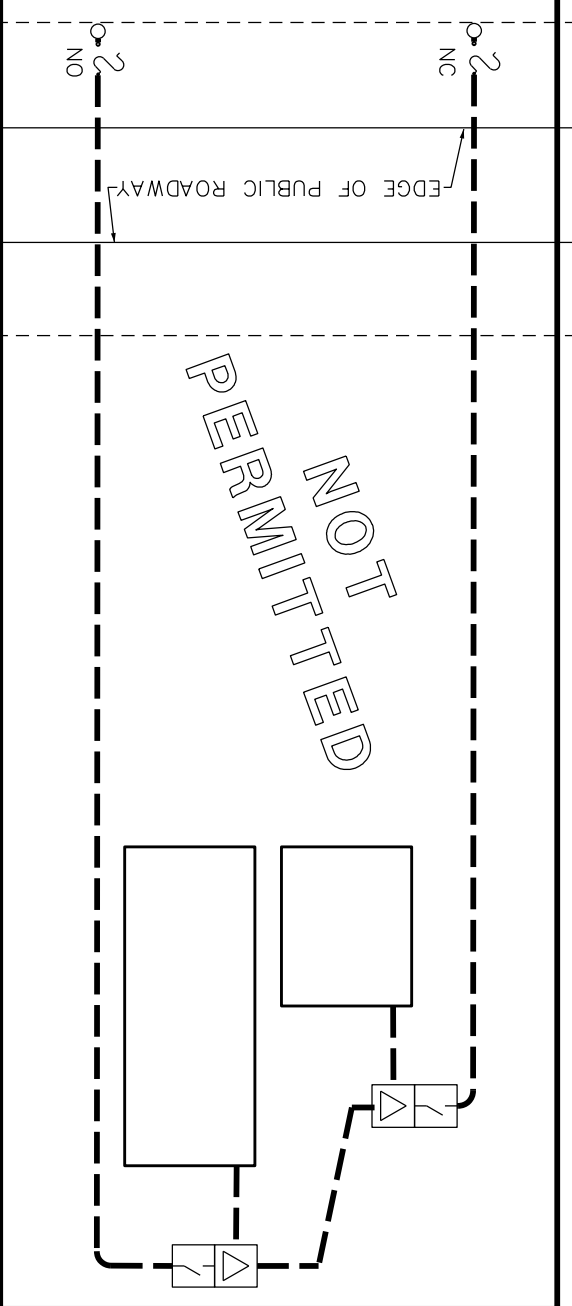
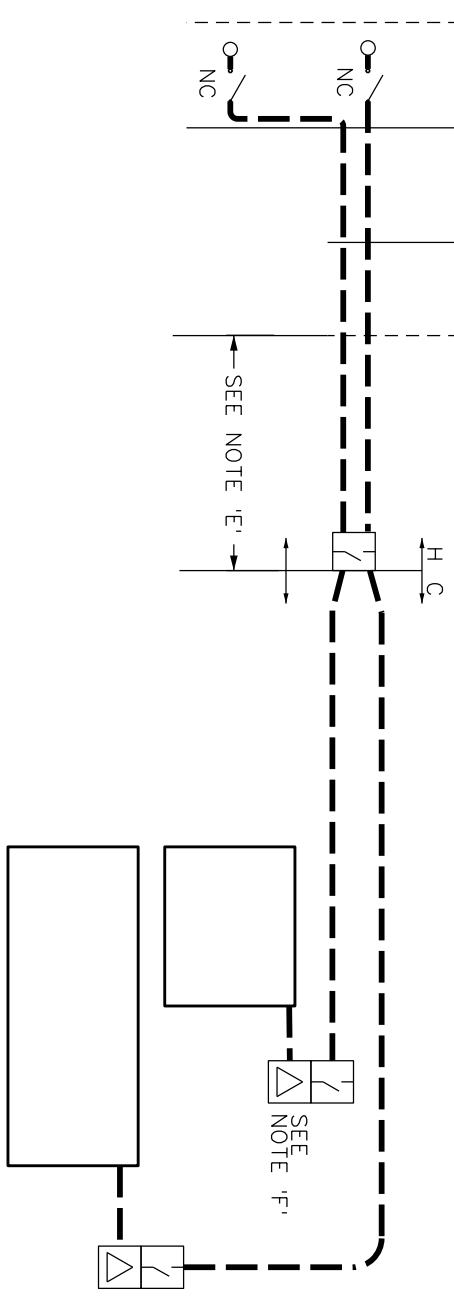


FIG. 6
MULTIPLE
BUILDING
DEVELOPMENT
PRIMARY
UNDERGROUND
TWIN RADIAL
SUPPLY



LEGEND:

ELECTRICAL OWNERSHIP DEMARCATION		H - HYDRO OTTAWA	C - CUSTOMER
PAD MOUNTED TRANSFORMER			
Vault TRANSFORMER			
SWITCHGEAR			
POLE MOUNTED TRANSFORMER			
POLE			
PROPERTY LINE			
UNDERGROUND CABLE			
OVERHEAD CABLE			
NORMALLY CLOSED/OPEN		NC/NO	

NOTES:

- A. OWNERSHIP DEMARCATION PRIOR 2000-11-01 REMAINS THE SAME UNLESS CHANGED BY A WRITTEN AGREEMENT.
- B. HYDRO OTTAWA IS RESPONSIBLE FOR ALL POWER DISTRIBUTION PLANT (ELECTRICAL & CIVIL) LOCATED IN THE PUBLIC ROAD RIGHT-OF-WAY AFTER INSTALLATION, UNLESS OWNED BY ANOTHER UTILITY.
- C. CONSULT HYDRO OTTAWA FOR OWNERSHIP AND OPERATING DEMARCATION POINTS FOR COMPLEX ELECTRICAL DISTRIBUTION SYSTEMS.
- D. CUSTOMER IS RESPONSIBLE FOR 100% OF THE PRIMARY SERVICE COSTS TO INCLUDE THE ELECTRICAL AND CIVIL COSTS FROM THE SUPPLY POINT AS PER CONDITIONS OF SERVICE.
- E. CIVIL WORK AND/OR GROUNDING WORK ON PRIVATE PROPERTY ARE CUSTOMER OWNED UNLESS SPECIFIED OTHERWISE DURING THE PROJECT DESIGN PHASE. HYDRO OTTAWA INSPECTION IS REQUIRED DURING EXECUTION OF THE WORK.
- F. CONSULT HYDRO OTTAWA FOR THE PRIMARY SERVICE REQUIREMENTS FOR YOUR PROJECT/INSTALLATION/OPERATION. ESA CONNECTION AUTHORIZATION REQUIRED FOR CUSTOMER OWNED HIGH VOLTAGE INSTALLATION PRIOR TO ENERGIZATION.
- G. SITE SPECIFIC LOSS ADJUSTMENT TO THE ENERGY ACCOUNT WILL APPLY WHEN GREATER THAN THE OEB DEFAULT LIMIT.

REVISIONS		PREP	CHKD	APPD	TITLE
REV: 1	DATE: 2015-04-24	MM	PL	CSM	ENGINEERING SPECIFICATION
CHANGE: GENERAL UPDATE					COMMERCIAL PRIMARY SERVICE
REV: CHANGE:	DATE: YYYY-MM-DD				ELECTRICAL OWNERSHIP
REV: CHANGE:	DATE: YYYY-MM-DD				DEMARCATION
REV: CHANGE:	DATE: YYYY-MM-DD				CUSTOMER OWNED TRANSFORMER
					GUIDELINE
 www.hydro-ottawa.com PREP: G. MOLNAR CHKD: B. BENNETT APPD: C. MALONE DATE: 2004-07-30 SCALE: N.T.S. @ ANSIB					NO-
ECCG0005					REV: 1