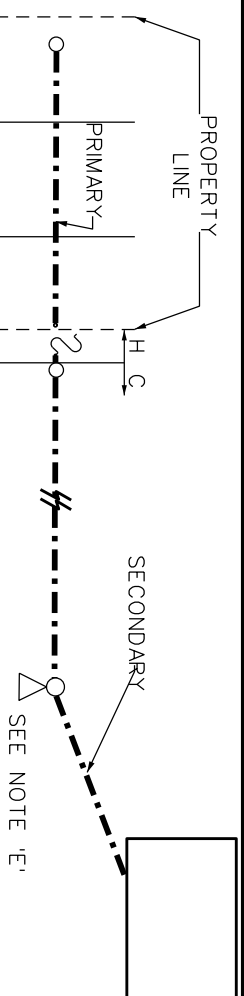
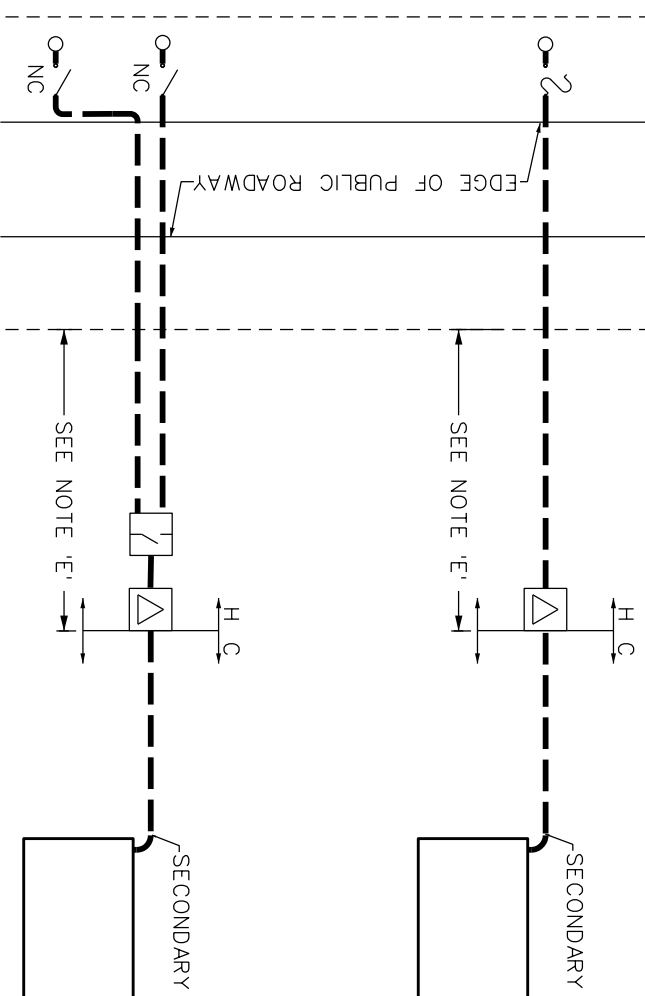


**FIG. 1  
PRIMARY  
OVERHEAD  
SUPPLY**

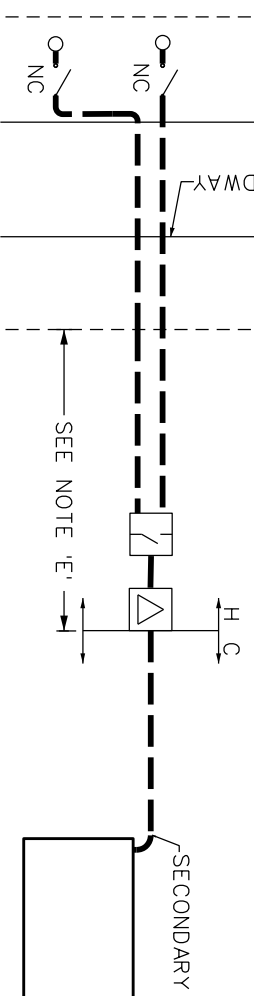


**FIG. 2**

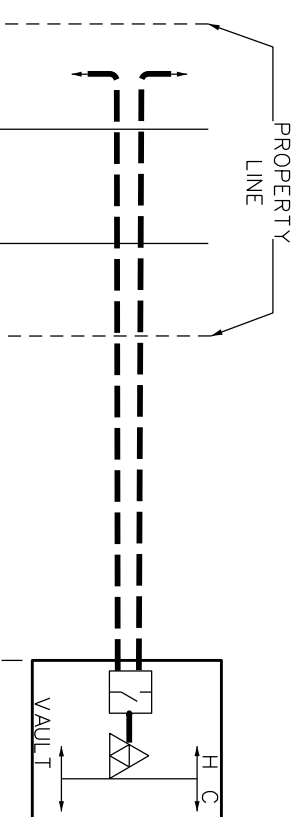
**PRIMARY  
UNDERGROUND  
RADIAL SUPPLY**



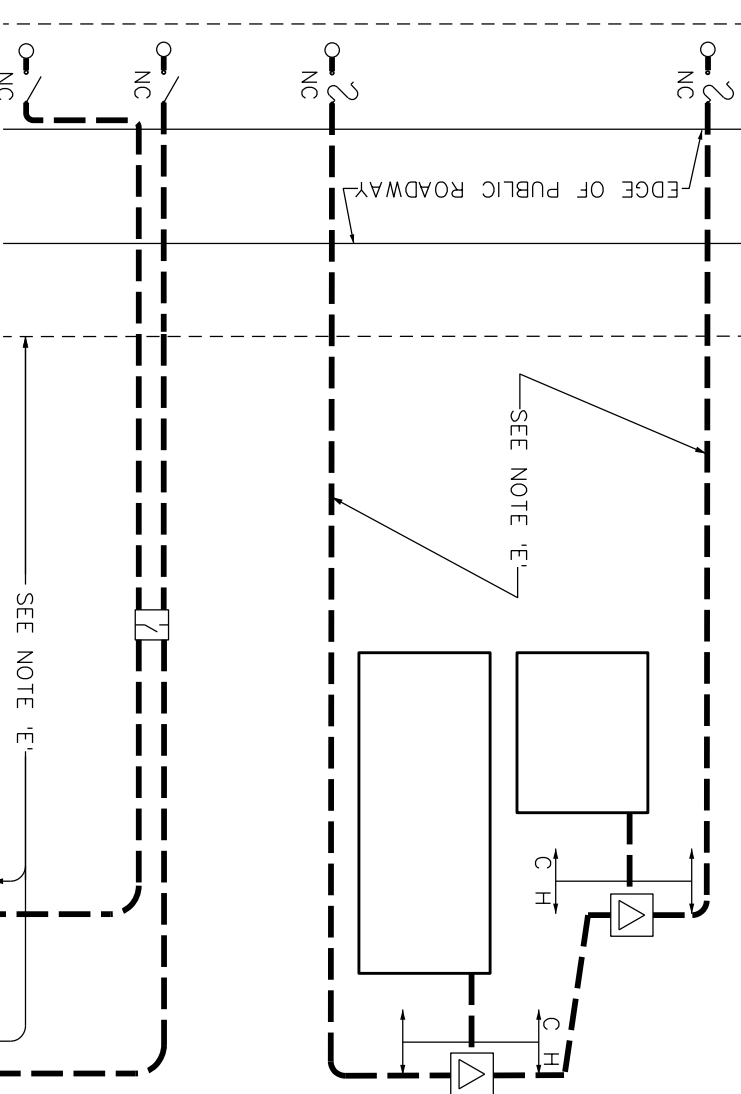
**FIG. 3  
PRIMARY  
UNDERGROUND  
TWIN RADIAL  
SUPPLY**



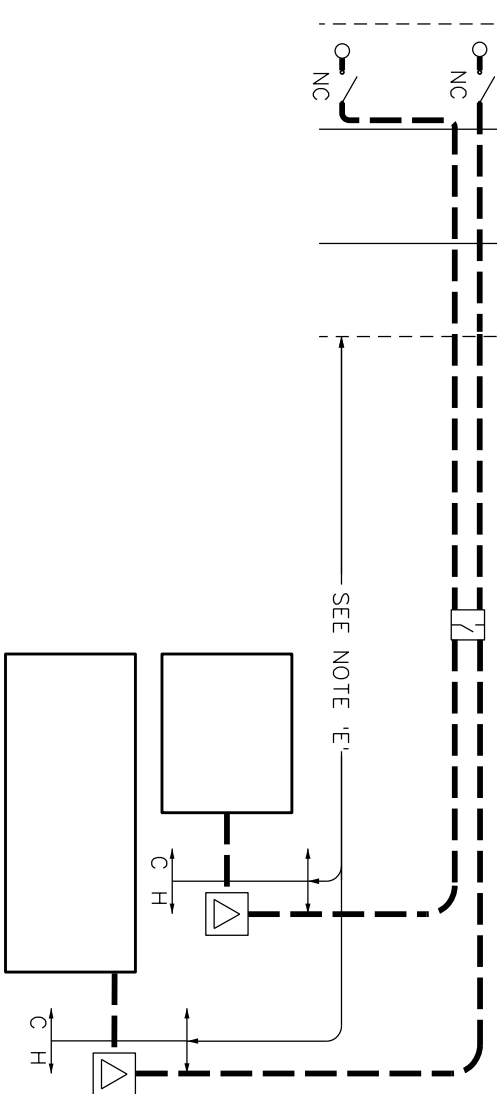
**FIG. 4  
PRIMARY  
UNDERGROUND  
HYDRO LOOP  
SUPPLY  
(NOTE 'F')**



**FIG. 5  
MULTIPLE  
BUILDING  
DEVELOPMENT  
PRIMARY  
UNDERGROUND  
LOOP SUPPLY**



**FIG. 6  
MULTIPLE  
BUILDING  
DEVELOPMENT  
PRIMARY  
UNDERGROUND  
TWIN RADIAL  
SUPPLY**



- NOTES:**
- A. OWNERSHIP DEMARCATION PRIOR 2000-11-01 REMAINS THE SAME UNLESS CHANGED BY A WRITTEN AGREEMENT.
  - B. HYDRO OTTAWA IS RESPONSIBLE FOR ALL POWER DISTRIBUTION PLANT (ELECTRICAL & CIVIL) LOCATED IN THE PUBLIC ROAD RIGHT-OF-WAY AFTER INSTALLATION, UNLESS OWNED BY ANOTHER UTILITY.
  - C. CONSULT HYDRO OTTAWA FOR OWNERSHIP AND OPERATING DEMARCATION POINTS FOR COMPLEX ELECTRICAL DISTRIBUTION SYSTEMS.
  - D. CUSTOMER IS RESPONSIBLE FOR 100% OF THE PRIMARY SERVICE COSTS TO INCLUDE THE ELECTRICAL AND CIVIL COSTS FROM THE SUPPLY POINT AS PER CONDITIONS OF SERVICE.
  - E. CIVIL WORK AND/OR GROUNDING WORK ON PRIVATE PROPERTY ARE CUSTOMER OWNED UNLESS OTHERWISE SPECIFIED AND AGREED BY HYDRO OTTAWA AND THE CUSTOMER. HYDRO OTTAWA INSPECTION IS REQUIRED DURING THE EXECUTION OF THE WORK.
  - F. TRANSFORMER MAY ALSO BE AN OUTSIDE PAD-MOUNT UNIT PROVIDED SUFFICIENT SPACE, ACCESS, AND LEGISLATION PERMITS.
  - G. SITE SPECIFIC LOSS ADJUSTMENT TO THE ENERGY ACCOUNT WILL APPLY WHEN GREATER THAN THE OEB DEFAULT LIMIT.

**LEGEND:**

	H- HYDRO OTTAWA		C- CUSTOMER
			NC/NO

REVISIONS		PREP	CHKD	APPD	TITLE
REV: 1	DATE: 2004-08-03	GM	PL	GSM	ENGINEERING SPECIFICATION COMMERCIAL PRIMARY SERVICE ELECTRICAL OWNERSHIP DEMARCATION HYDRO OWNED TRANSFORMER GUIDELINE
CHANGE:	REVISE DRAWING CONTENT TO SHOW HYDRO OWNED TRANSFORMER ONLY	CP	CP	GSM	
REV: 2	DATE: 2008-02-27				
CHANGE:	DRAWING NUMBER CHANGED FROM ECG0002 TO ECG0009				
REV: 3	DATE: 2015-04-24	MM	PL	GSM	
CHANGE:	GENERAL UPDATE				



PREP: F. BOLO  
CHKD: D. FEE  
APPD: C. MALONE  
DATE: 2002-05-22  
SCALE: N.T.S. @ ANSIB

NO: **ECG0009**

REV: 1 OF 1  
REV: 3