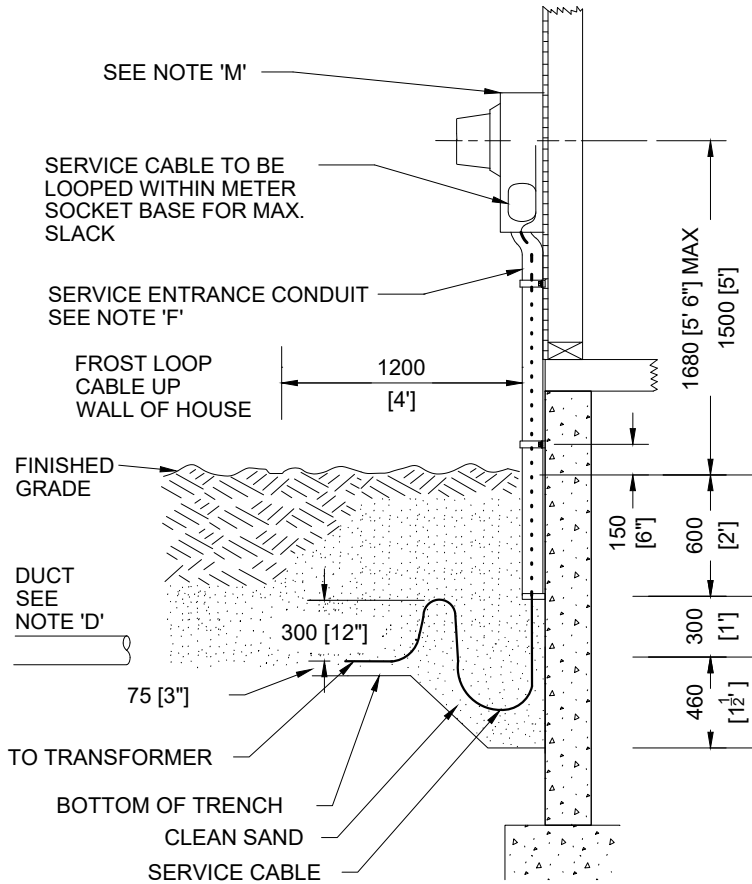
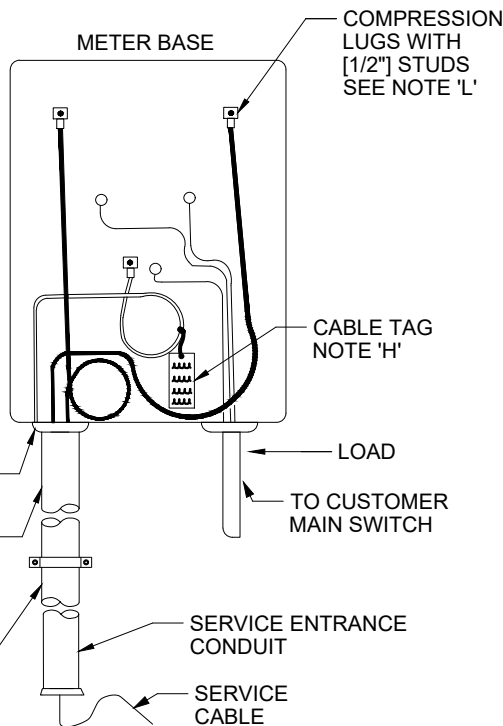


G:\4.2.3 TECH STD & MAT\01 STDS\01 HOLIE-ELECTRICAL-CUSTOMER\ECS0002 R7 RES UG 120V-240V, 1PH, 3W, L-T2000A SECONDARY SERVICE.DWG




NOTES:

- A. ALL DIMENSIONS ARE IN MILLIMETRES, UNLESS OTHERWISE SPECIFIED.
- B. METER AND SERVICE TRENCH LOCATION SHALL BE APPROVED BY HYDRO OTTAWA BEFORE DIGGING THE TRENCH. METER INSTALL BETWEEN 1500 [5'] AND 1680 [5'6"] ABOVE FINISHED GRADE.
- C. SERVICE ENTRANCE REQUIREMENTS FOR RESIDENTIAL SHALL CONFORM TO THE ONTARIO BUILDING CODE, (SECTION 9.35, SUBSECTION 9.35.5), THE ONTARIO ELECTRICAL SAFETY CODE AND THE APPLICABLE HYDRO OTTAWA SPECIFICATIONS.
- D. INSTALL UNDERGROUND CABLE IN 103 [4"] DB2 DUCT TO WITHIN 1200 [4'] OF METER BASE WHEN ADJACENT TO OR UNDER SURFACES SUCH AS DRIVEWAYS, SIDEWALKS, ETC, LARGE OBSTACLES (SUCH AS TREES, HEDGES, OR DECORATIVE STONE), ESTATE OR INFILL TYPE LOTS OR FOR LENGTHS OF CABLE >30M [100'] ON PRIVATE PROPERTY. PVC EXPANSION JOINTS TO BE USED AS REQUIRED.
- E. FOR RESIDENTIAL SERVICES GREATER THAN 200A, REFER TO HYDRO OTTAWA REVENUE METERING SPECIFICATION, GCS0008.
- F. SERVICE CONDUIT SIZE SHALL BE 53 [2"] EXCEPT FOR 250MCM CONDUCTOR WHICH SHALL BE 63 [2-1/2"].
- G. MINIMUM DIMENSIONS FOR A 200A KING SIZE METER SOCKET BASE ARE 432 X 300 X 121 [17"H X 12"W X 4.75"D].
- H. FOR INFORMATION ON CABLE TAG REFER TO HYDRO OTTAWA SPECIFICATION GCS0012.
- I. SERVICE ENTRANCE CONDUIT IS TO BE SECURELY FASTENED TO THE WALL 150 [6"] ABOVE FINAL GRADE.
- J. REFER TO MCS0105 & MCS0106 FOR MINIMUM CLEARANCE REQUIREMENTS IN FRONT OF METER TO CUSTOMER PROPERTY LINE AND/OR NEXT TO METER EQUIPMENT
- K. BUSHINGS TO BE USED AT ALL CONDUIT TERMINATIONS.
- L. REFER TO HYDRO OTTAWA SPECIFICATION MCS0018 FOR METER SOCKET BASE WIRING DETAIL.
- M. CSA APPROVED 200A U/G KING SIZE METER SOCKET BASE WITH COMPRESSION LUGS FOR ALL SERVICES <=200A COMPLETE WITH HIGH STRENGTH NON-TRACKING BLOCKS, COMPRESSION LUGS, ON LINE SIDE, LINE SIDE SAFETY SHIELDS, AND METAL SCREW TYPE LOCKING SAFETY RING.



REVISIONS	PREP	CHKD	APPD
REV: 5 DATE: 2014-09-03 CHANGE: UPDATED NOTED AND DIMENSIONS	SK	SMC	CSM
REV: 6 DATE: 2016-01-13 CHANGE: UPDATED TITLE	JD	SMC	CSM
REV: 7 DATE: 2020-06-18 CHANGE: UPDATED NOTE 'J', MINOR CORRECTIONS	EV	PL	RH



WWW.HYDROOTTAWA.COM

PREP: G. GOFORTH
CHKD: C. PROULX
APPD: C. MALONE P. Eng
DATE: 2002-01-29
SCALE: N.T.S. @ ANSI A

TITLE		ENGINEERING SPECIFICATION	
		RES UG 120V/240V, 1PH, 3W 200A SECONDARY SERVICE	
		CONSTRUCTION DETAIL	
NO:	ECS0002		REV: 7
	1	OF	1