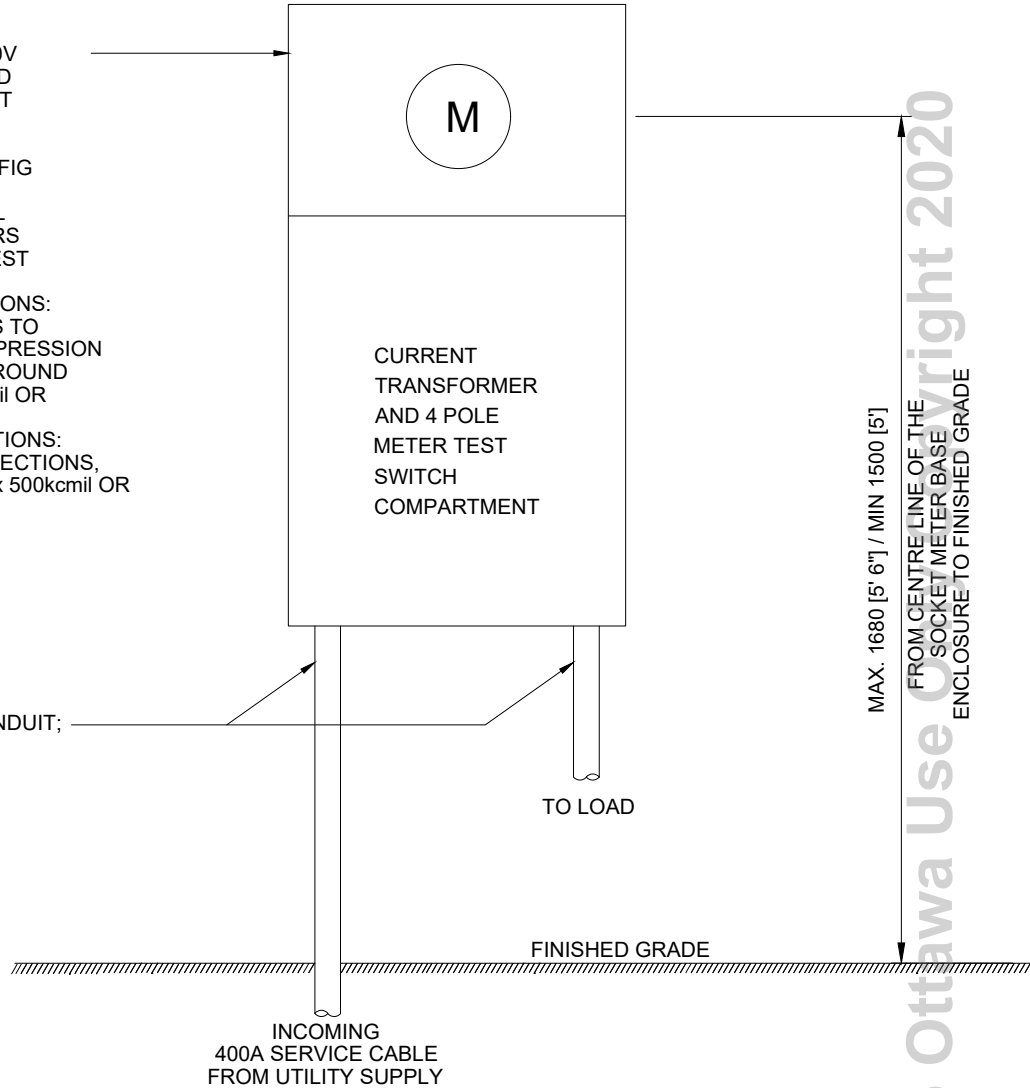



1-PHASE 400A, 120/240V
 TRANSFORMER RATED
 COMBINATION SOCKET
 BASE METERING
 ENCLOSURE C/W
 -METER SOCKET CONFIG
 FOR 5-JAW METER
 -GROUNDED NEUTRAL
 -TWIN ACCESS COVERS
 -4 POLE METERING TEST
 SWITCH
 -LINE SIDE TERMINATIONS:
 DOUBLE [1/2"] STUDS TO
 ACCOMODATE COMPRESSION
 LUGS FOR UNDERGROUND
 SERVICE (1 x 500kcmil OR
 2 x 250kcmil)
 -LOAD SIDE TERMINATIONS:
 TUNNEL TYPE CONNECTIONS,
 DUAL RATED FOR 1 x 500kcmil OR
 2 x 250kcmil



NOTES:

- A. FOR INSTALLATION DETAILS REFER TO HYDRO OTTAWA REVENUE METERING SPECIFICATION GCS0008, TABLE 3.
- B. THE 3-WIRE CURRENT TRANSFORMER AND METER SHALL BE SUPPLIED AND INSTALLED BY HYDRO OTTAWA, METERING SERVICES.
- C. ALL DIMENSIONS ARE IN MILLIMETRES, UNLESS OTHERWISE SPECIFIED.
- D. ALL CONDUIT TO BE TERMINATED WITH BUSHINGS.
- E. RIGID PVC CONDUIT TO BE USED IF INSTALLED IN OUTDOOR LOCATION; EMT CONDUIT USED IF INSTALLED IN INDOOR LOCATION. PVC EXPANSION COUPLINGS USED AS PER ONTARIO ELECTRICAL SAFETY CODE (OESC).
- F. REFER TO MCS0105 & MCS0106 FOR MINIMUM CLEARANCE REQUIREMENTS IN FRONT OF METER TO CUSTOMER PROPERTY LINE AND/OR NEXT TO METER EQUIPMENT.

REVISIONS				PREP	CHKD	APPD	 HydroOttawa <small>WWW.HYDROOTTAWA.COM</small>	TITLE ENGINEERING SPECIFICATION RES UG 120V/240V, 1PH, 3W, 400A TRANSFORMER RATED SERVICE WITH WEATHERPROOF COMBINATION METER SOCKET BASE CONSTRUCTION DETAIL		
REV: 3	DATE: 2014-09-03	SK	SMC	CSM						
CHANGE: UPDATED NOTES AND DIMENSIONS										
REV: 4	DATE: 2016-01-13	JD	SMC	CSM						
CHANGE: UPDATED TITLE										
REV: 5	DATE: 2020-06-18	EV	PL	RH						
CHANGE: UPDATED NOTE 'F'										
PREP: G. MOLNAR CHKD: B. PECK APPD: C. MALONE P. ENG DATE: 2003-07-22 SCALE: N.T.S. @ ANSI A							NO:	MCS0003	1	REV:
									OF	5
									1	