

FIG. 1 SERVICE EQUIPMENT ELEVATION VIEW

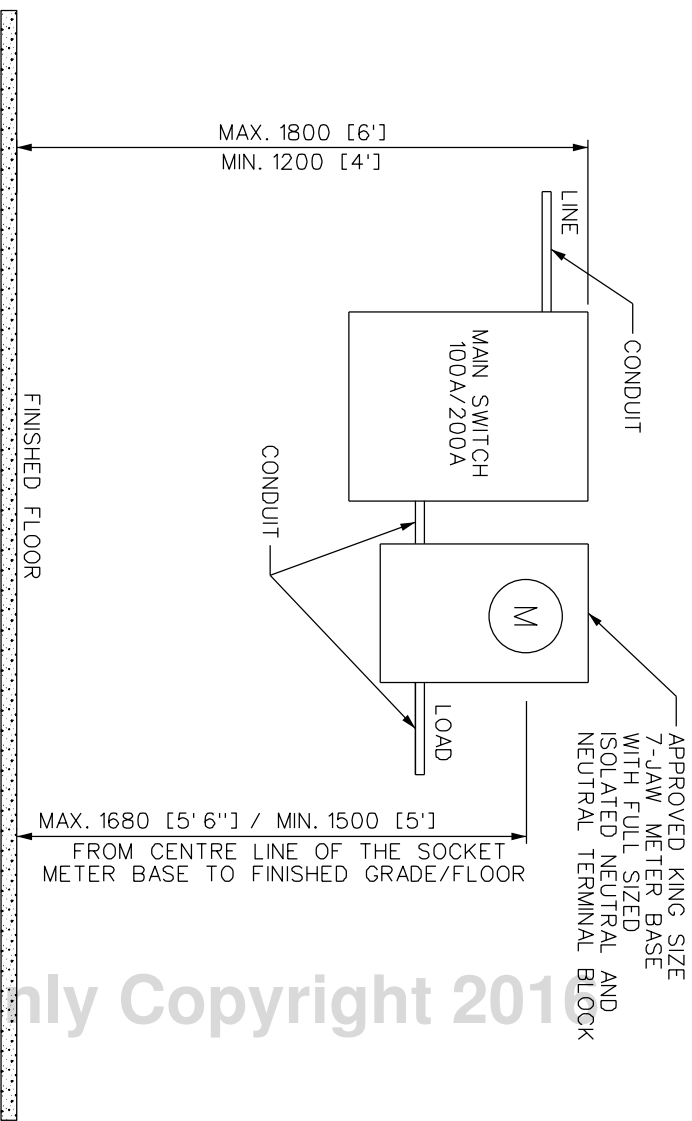
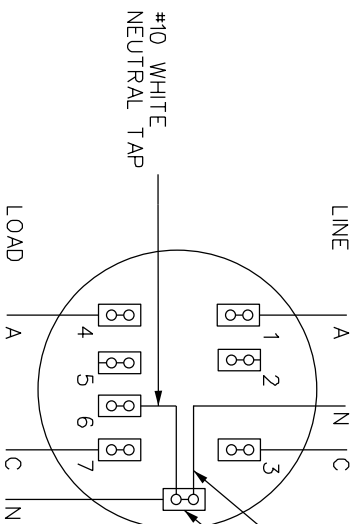


FIG. 2 METER SOCKET BASE WIRING DIAGRAM:



NETWORK, THREE WIRE CIRCUIT,
120/208V UTILIZING 1-100A
OR 1-200A KING SIZE 7 JAW
METER SOCKET BASE.

VOLTAGE AT SOCKET	
TERMINAL NO. 1-2	2-3
0V	0V
2-4	1-3
0V	208V
2-7	1-6
0V	120V
1-6	3-6
120V	120V
N-G	0V

NOTES:

- A. FOR METER SOCKET BASE AND INDIVIDUAL NETWORK SERVICES REFER TO HYDRO OTTAWA REVENUE METERING SPECIFICATION GCS0008, TABLE 5.
- B. FULL SIZED NEUTRAL CONDUCTOR TERMINATED AT FIRST CUSTOMER OWNED DEVICE AFTER METER BASE.
- C. ALL DIMENSIONS ARE IN MILLIMETERS, UNLESS OTHERWISE SPECIFIED.
- D. MINIMUM OF 1500 [5'] OF CLEARANCE REQUIRED IN FRONT OF ALL METERING EQUIPMENT.
- E. RIGID SCHEDULE 80 PVC CONDUIT TO BE USED IF INSTALLED INDOOR LOCATION; ENT CONDUIT USED IF INSTALLED IN INDOOR LOCATION. PVC EXPANSION COUPLERS USED AS PER ONTARIO ELECTRICAL SAFETY CODE (OESCA).

REV. / CHANGE	DATE	BY	CHKD	APPD	TITLE
REV. 2	2008-03-19	GM	KH	CSM	ENGINEERING SPECIFICATION RES 120V/208Y 2PH, 3W, 100A 200A NETWORK SERVICE ENTRANCE AND METER SOCKET WIRING DETAIL CONSTRUCTION DETAIL
CHANGE:					
REV. 3	2014-09-03	SK	SMC	CSM	
CHANGE:					
REV. 4	2016-01-13	JD	SMC	CSM	
CHANGE:					



PREP: G. MOLNAR
 CHKD: B. PECK
 APPD: C. MALONE
 DATE: 2003-07-22
 SCALE: N.T.S. @ ANSIA

NO: **MCS0005**
 P.Eng.
 1 OF 1 REV: 4