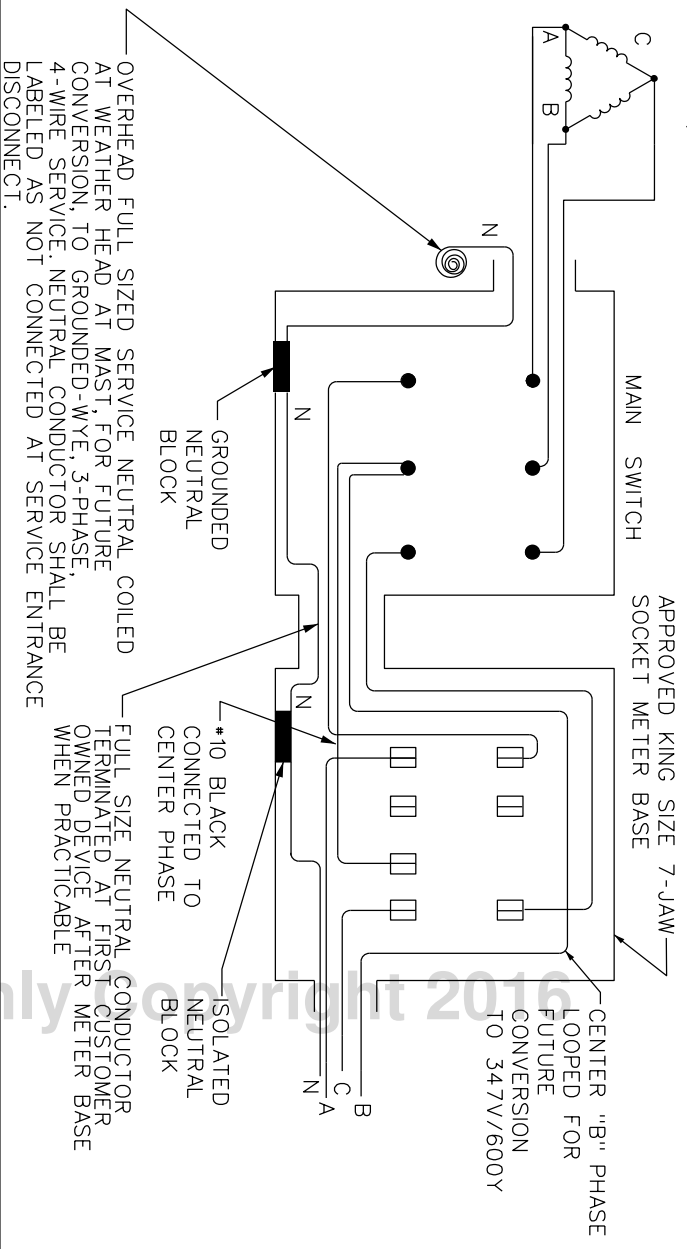
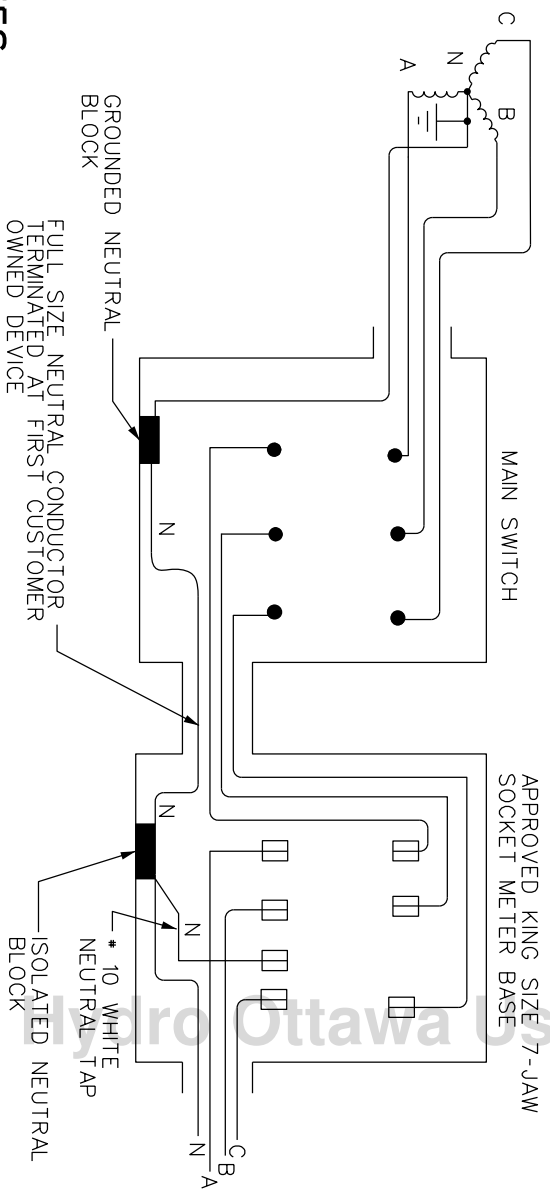


**FIG. 1 600V, 100A/200A DELTA CONFIGURATION (NOT FOR NEW SERVICES)**



**FIG. 2 347V/600Y, 100A/200A GROUND-ED-WYE CONFIGURATION**



**NOTES:**

- A. TO CONFIRM SUPPLY VOLTAGE, PLEASE CALL HYDRO OTTAWA METERING SERVICES, DESIGN AND CONSTRUCTION, OR SERVICE DESK; REFER TO HYDRO OTTAWA'S CONDITIONS OF SERVICE, ECS0012, FOR CONTACT INFORMATION.
- B. FOR METER EQUIPMENT AND INSTALLATION REQUIREMENTS, REFER TO HYDRO OTTAWA REVENUE METERING SPECIFICATION GCS0008, TABLE 5.
- C. ALL DIMENSIONS ARE IN MILLIMETERS, UNLESS OTHERWISE SPECIFIED.

REVISIONS	PREP	CHKD	APPD	TITLE
REV: 2 DATE: 2008-03-19 CHANGE: GCS0008 SECTION CHANGED	GM	KH	CSM	ENGINEERING SPECIFICATION COM 600V 3PH 3W DELTA OR 347V/600Y, 3PH, 4W WYE, ≤ 200A 7-JAW METER BASE WIRING DETAIL CONSTRUCTION DETAIL <b>MCS0016</b>
REV: 3 DATE: 2014-09-03 CHANGE: UPDATE BLOCK AND NOTES	SK	SMC	CSM	
REV: 4 DATE: 2016-01-13 CHANGE: UPDATE TITLE	JD	SMC	CSM	
www.hydroottawa.com PREP: F. BOLO CHKD: B. PECK APPD: C. MALONE DATE: 2003-07-22 SCALE: N.T.S. @ ANSIA				NO: <b>MCS0016</b>
				1 REV: OF 4

DATE TIME

FILE\$