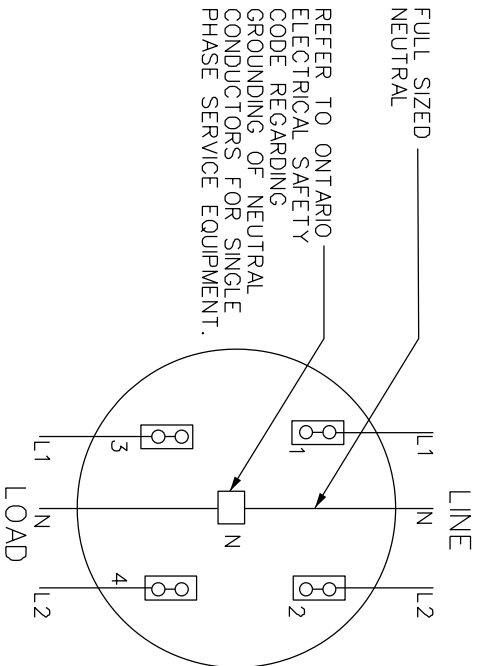
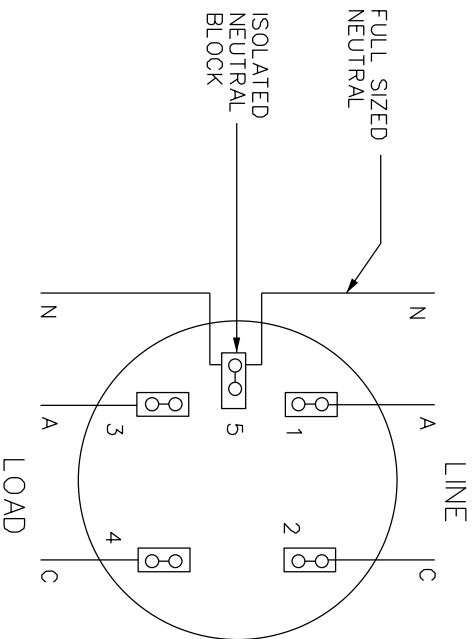


FIG. 1 - 120/240V, 1PH, 3W, 1-100A OR 1-200A, KING SIZE METER SOCKET BASE



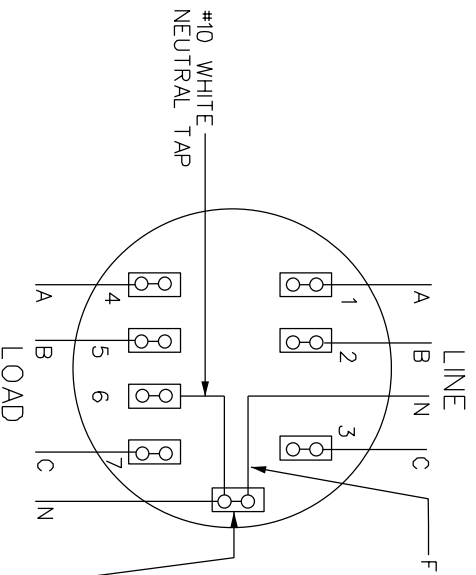
VOLTAGE AT SOCKET						
TERMINAL NO.	1-2	2-3	2-4	1-N	1-4	2-N
NORMAL	240V	0V	120V	0V	120V	120V

FIG. 2 - 120/208V, 2PH, 3W, 100A OR 200A, 5-JAW METER SOCKET IN METER CENTER ONLY




VOLTAGE AT SOCKET						
TERMINAL NO.	1-2	2-3	1-3	2-4	1-5	2-5
NORMAL	208V	0V	0V	0V	120V	120V

FIG. 3 - 120V/208Y OR 347V/600Y, 3PH, 4W, 100A OR 200A, KING SIZE 7-JAW METER SOCKET BASE



VOLTAGE AT SOCKET							
TERMINAL NO.	1-2	2-3	1-3	1-6	2-6	3-6	N-G
120V/208Y	208V	208V	120V	120V	120V	120V	0V
347V/600Y	600V	600V	600V	347V	347V	347V	0V

REVISIONS	PREP	CHKD	APPD	TITLE
REV: 1 DATE: 2012-04-04 CHANGE: REVISED FIG 1 NOTE.	RW	BP	CSM	
REV: 2 DATE: 2014-09-03 CHANGE: UPDATE "VOLTAGE AT SOCKET" TABLE	SK	SMC	CSM	
REV: 3 DATE: 2016-01-13 CHANGE: UPDATE TITLE	JD	SMC	CSM	


HydroOttawa
 WWW.HYDROOTTAWA.COM

ENGINEERING SPECIFICATION
ERF /AGR/COM/RES
1PH AND 3PH, 4-JAW, 5-JAW,
AND 7-JAW WIRING DETAIL
WIRING DETAIL

MCS0018

NO:	1	REV:	1
DATE:	2003-07-22	DATE:	2016-01-13
SCALE:	N.T.S. @ ANSIA	SCALE:	N.T.S. @ ANSIA