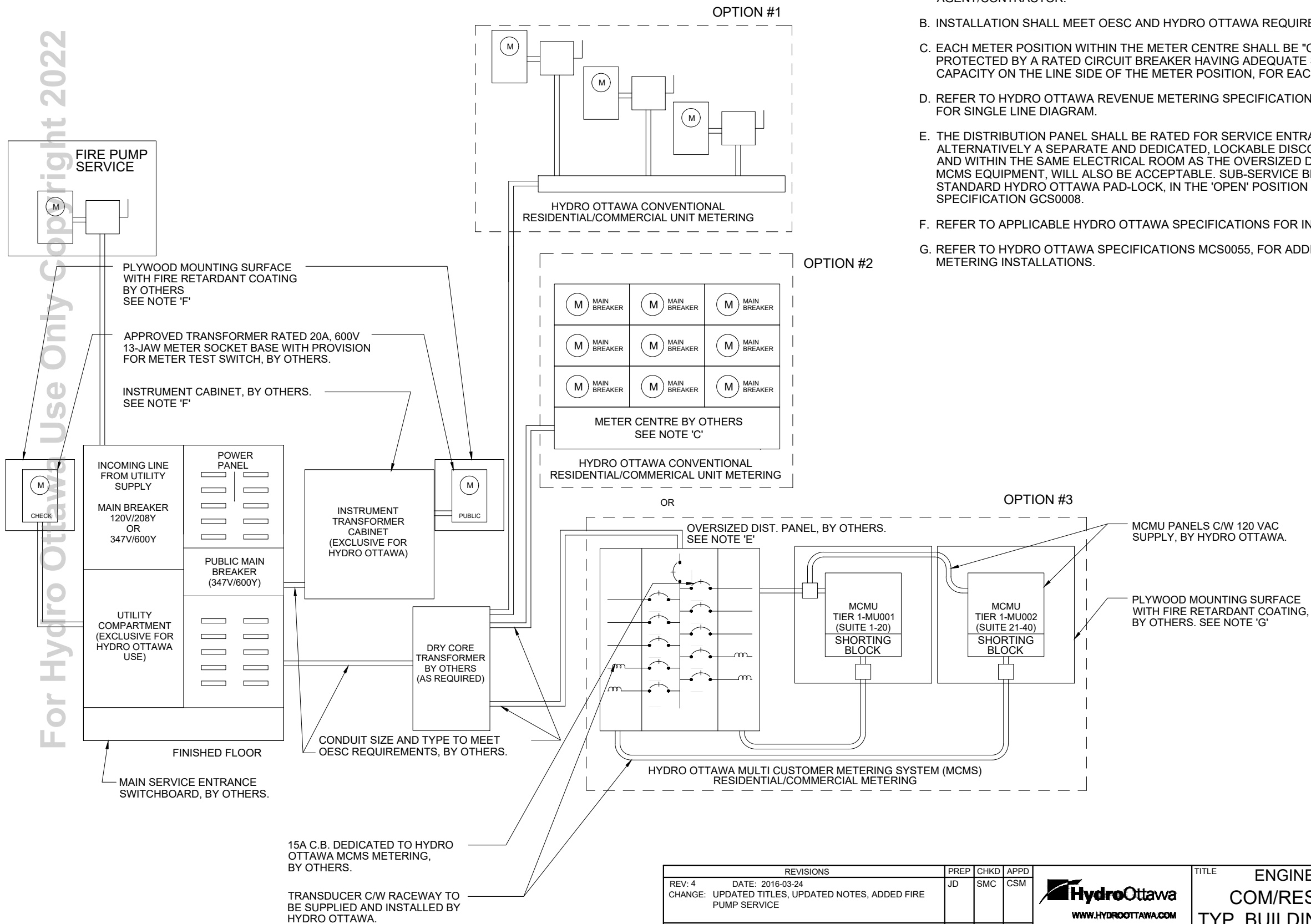


For Hydro Ottawa Use Only Copyright 2022



**NOTES:**

- A. 'BY OTHERS' REFER TO EQUIPMENT SUPPLIED AND INSTALLED BY THE CUSTOMER AND/OR THEIR AGENT/CONTRACTOR.
- B. INSTALLATION SHALL MEET OESC AND HYDRO OTTAWA REQUIREMENTS.
- C. EACH METER POSITION WITHIN THE METER CENTRE SHALL BE "COLD METERED", EQUIPPED, AND PROTECTED BY A RATED CIRCUIT BREAKER HAVING ADEQUATE SHORT CIRCUIT INTERRUPTION CAPACITY ON THE LINE SIDE OF THE METER POSITION, FOR EACH DISTINCT METER SOCKET.
- D. REFER TO HYDRO OTTAWA REVENUE METERING SPECIFICATION GCS0008 AND DRAWING MCS0020 FOR SINGLE LINE DIAGRAM.
- E. THE DISTRIBUTION PANEL SHALL BE RATED FOR SERVICE ENTRANCE C/W LOCKABLE MAIN SWITCH. ALTERNATIVELY A SEPARATE AND DEDICATED, LOCKABLE DISCONNECT DEVICE, IMMEDIATELY BEFORE AND WITHIN THE SAME ELECTRICAL ROOM AS THE OVERSIZED DISTRIBUTION PANEL EQUIPPED WITH MCMS EQUIPMENT, WILL ALSO BE ACCEPTABLE. SUB-SERVICE BREAKERS SHALL BE LOCKABLE, WITH A STANDARD HYDRO OTTAWA PAD-LOCK, IN THE 'OPEN' POSITION AS PER HYDRO OTTAWA SPECIFICATION GCS0008.
- F. REFER TO APPLICABLE HYDRO OTTAWA SPECIFICATIONS FOR INSTALLATION REQUIREMENTS.
- G. REFER TO HYDRO OTTAWA SPECIFICATIONS MCS0055, FOR ADDITIONAL REQUIREMENTS FOR MCMS METERING INSTALLATIONS.

REVISIONS		PREP	CHKD	APPD
REV: 4	DATE: 2016-03-24	JD	SMC	CSM
CHANGE: UPDATED TITLES, UPDATED NOTES, ADDED FIRE PUMP SERVICE				
REV: 5	DATE: 2020-08-27	EV	PL	RH
CHANGE: REMOVED NOTES 'A' & 'G'				
REV: 6	DATE: 2022-05-13	LS	YB	ED
CHANGE: UPDATED NOTES				

**HydroOttawa**  
www.hydroottawa.com

PREP: G. MOLNAR  
CHKD: B. PECK  
APPD: C. MALONE P. ENG  
DATE: 2002-08-02  
SCALE: N.T.S. @ ANSI B

TITLE		ENGINEERING SPECIFICATION COM/RES MULTI UNIT BUILDING TYP. BUILDING DISTRIBUTION SYSTEM WITH UNIT METERING OPTIONS CONSTRUCTION DETAIL	
NO:		<b>MCS0023</b>	
		1 OF 1	REV: <b>6</b>

2022-06-08 1:33 PM