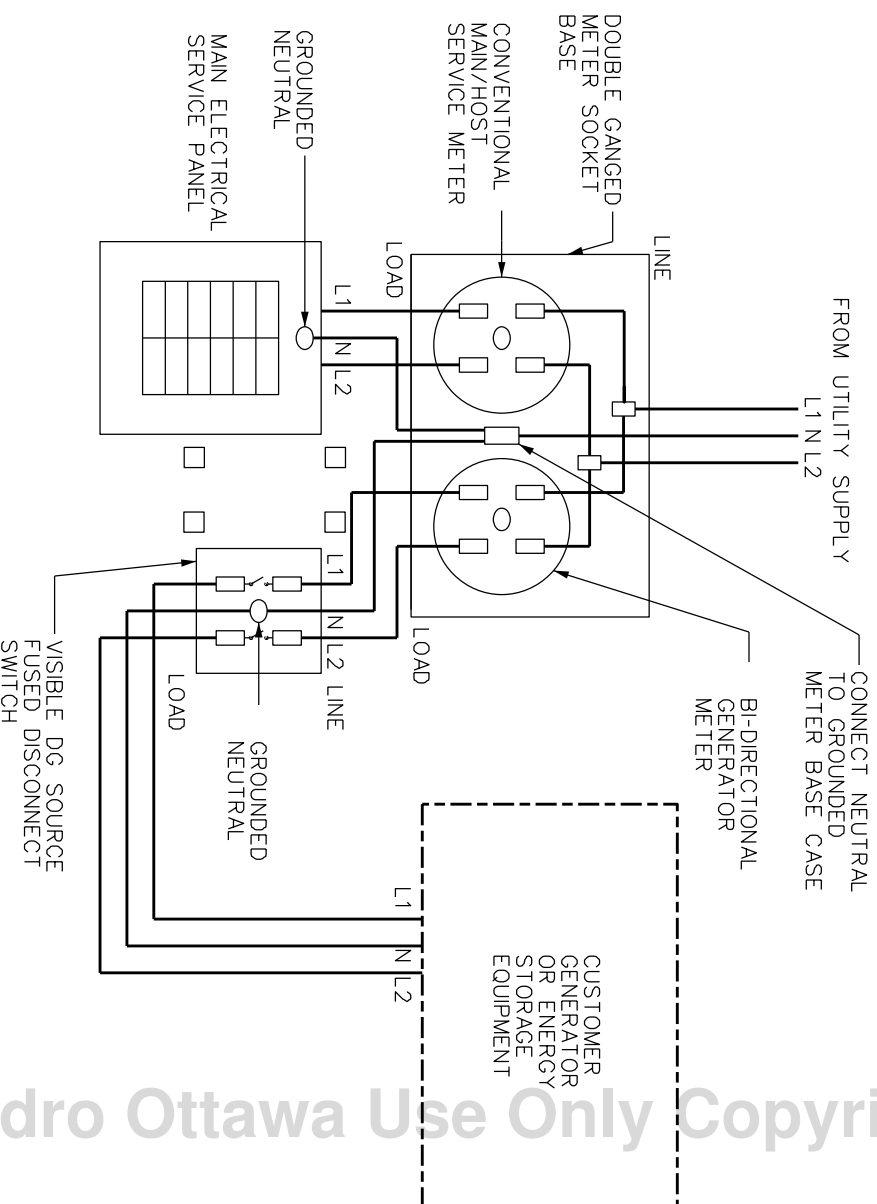


- NOTES:**
- REFER TO HYDRO OTTAWA METERING SPECIFICATION GCS0008 FOR METERING REQUIREMENTS.
 - REFER TO HYDRO OTTAWA CONSTRUCTION DETAIL ECG0011 FOR SINGLE PHASE OVERHEAD CONNECTION OF PARALLEL CONNECTED MICRO GENERATORS.
 - REFER TO HYDRO OTTAWA CONSTRUCTION DETAIL ECG0013 FOR SINGLE PHASE UNDERGROUND CONNECTION OF PARALLEL CONNECTED MICRO GENERATORS.
 - THE PROPOSED INSTALLATION SHALL COMPLY WITH THE ONTARIO ELECTRICAL SAFETY CODE (OESC) AND IS SUBJECT TO THE ELECTRICAL SAFETY AUTHORITY (ESA) INSPECTION AND APPROVAL.
 - ELECTRICAL PANEL, ISOLATING DISCONNECT SWITCH, AND GENERATOR EQUIPMENT TO BE CONNECTED AS PER ONTARIO ELECTRICAL SAFETY CODE (OESC).
 - REFER TO THE OESC REGARDING THE GROUNDING OF NEUTRAL CONDUCTORS.



DEFINITIONS:

"DG SOURCE FUSED DISCONNECT" MEANS AN ELECTRICAL SAFETY AUTHORITY (ESA) APPROVED DEVICE WITH FACTORY INSTALLED OVER-CURRENT PROTECTION RATED AT EITHER 100% FULL-LOAD AMPS (FLA) OR 80% OF THE AVAILABLE FAULT AMPS FROM THE CUSTOMER'S GENERATION OR ENERGY STORAGE EQUIPMENT, WHICHEVER IS GREATER; MOULDED CASE BREAKERS ARE NOT ACCEPTABLE. IT SHALL PROVIDE AN OBVIOUS VISIBLE OPEN POINT. THIS DEVICE IS USED TO ISOLATE THE CUSTOMER'S DISTRIBUTION GENERATION (DG) EQUIPMENT, OR ENERGY RESOURCE FACILITY (ERF) EQUIPMENT, FROM THE EQUIPMENT THAT IT SUPPLIES.

REVISIONS	PREP	CHKD	APPD	TITLE
REV: 1 DATE: 2014-09-03 CHANGE: UPDATED WIRING TO ENSURE L1, L2 ON S.SIDE MATCHES L.SIDE	SK	SMC	CSM	ENGINEERING SPECIFICATION ERF 120V/240V, 1PH, 3W, 200A OVERHEAD SERVICE ENTRANCE PARALLEL METERING <10KW WIRING DETAIL
REV: 2 DATE: 2016-02-05 CHANGE: UPDATE TITLE UPDATE NOTES	JD	SMC	CSM	
REV: CHANGE:	DATE: YYYY-MM-DD			CHKD: R. WILLIAMS APPD: B. EARNSHAW P.Eng. DATE: 2010-05-25 SCALE: N.T.S. @ ANSIA
NO: MCS0053				1 REV: 1 OF 1 2

