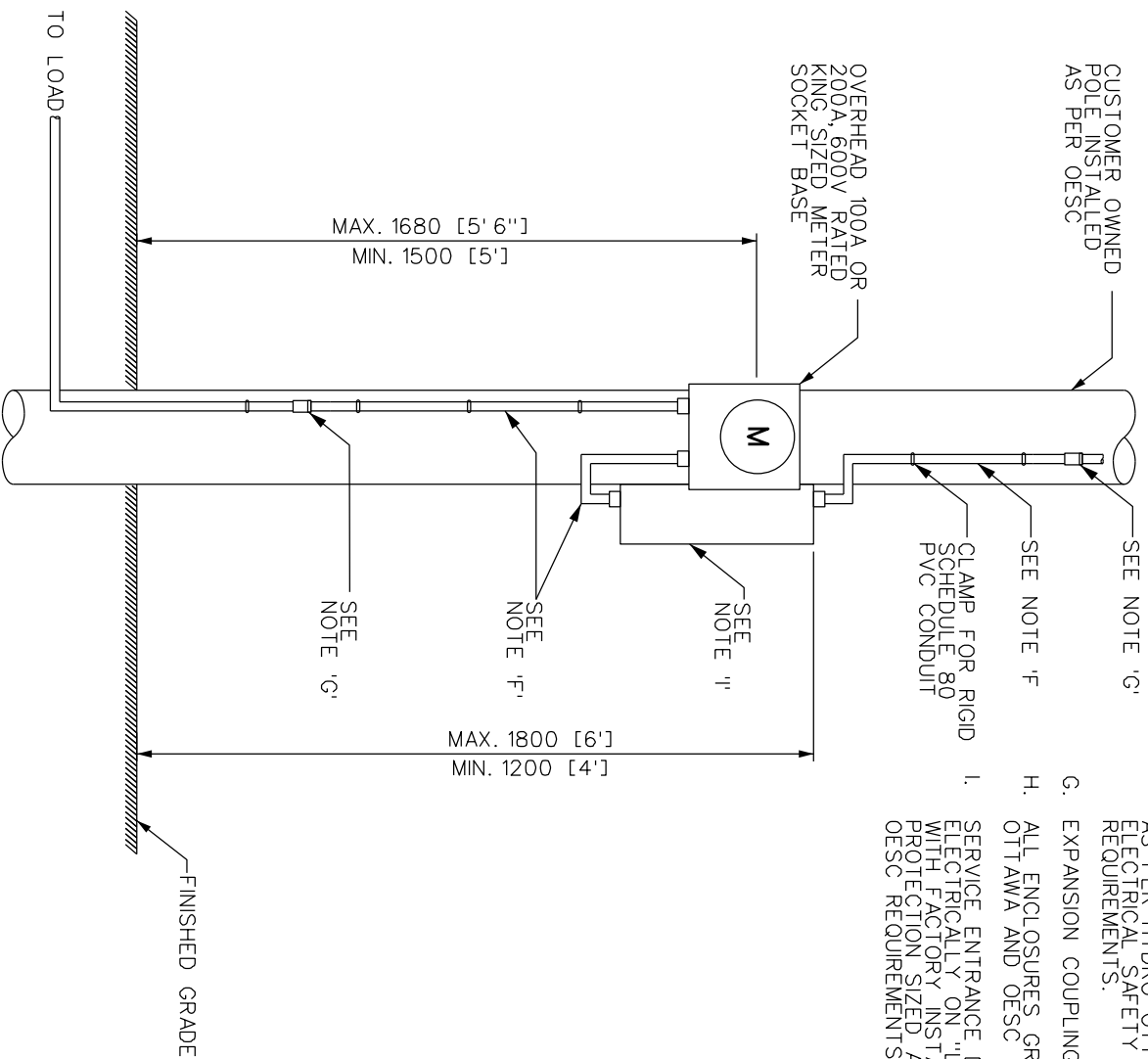


NOTES:

- A. ALL DIMENSIONS ARE IN MILLIMETERS, UNLESS OTHERWISE SPECIFIED.
- B. SERVICE SHALL BE "COLD" METERED.
- C. CONDUIT, METER SOCKET, AND SERVICE ENTRANCE ENCLOSURE SUBJECT TO REQUIREMENTS OF HYDRO OTTAWA REVENUE METERING SPECIFICATION GCS00008.
- D. METER SOCKET AND SERVICE ENTRANCE DISCONNECT SHALL BE NEMA-3R RATED OR BETTER.
- E. MINIMUM OF 1000 [3' 4"] OF CLEARANCE REQUIRED IN FRONT OF SERVICE ENTRANCE DISCONNECT AND REVENUE METER.
- F. RIGID MINIMUM SCHEDULE 80 PVC CONDUIT AS PER HYDRO OTTAWA AND ONTARIO ELECTRICAL SAFETY CODE (OESC) REQUIREMENTS.
- G. EXPANSION COUPLING AS PER OESC.
- H. ALL ENCLOSURES GROUNDED AS PER HYDRO OTTAWA AND OESC REQUIREMENTS.
- I. SERVICE ENTRANCE DISCONNECT CONNECTED ELECTRICALLY ON "LOAD" SIDE OF METER, WITH FACTORY INSTALLED OVER-CURRENT PROTECTION SIZED AS PER ESA AND OESC REQUIREMENTS.



REVISIONS	PREP	CHKD	APPD
REV: 1	JD	SMC	CSM
DATE: 2016-02-05			
CHANGE: UPDATE TITLE			
REV: CHANGE:			
DATE: YYYY-MM-DD			
REV: CHANGE:			
DATE: YYYY-MM-DD			

HydroOttawa
www.hydroottawa.com

PREP: M. MALONEY
CHKD: S. McNALLY (E.I.T.)
APPD: C. MALONE P. Eng.

DATE: 2014-09-03
SCALE: N.T.S. @ ANSIA

ENGINEERING SPECIFICATION

COM OH 120V/240V, 1PH, 3W ≤200A, SERVICE ENTRANCE DISCONNECT AND METERING ON CUSTOMER OWNED POLE

CONSTRUCTION DETAIL

MCS0072

NO:	1	REV:	1