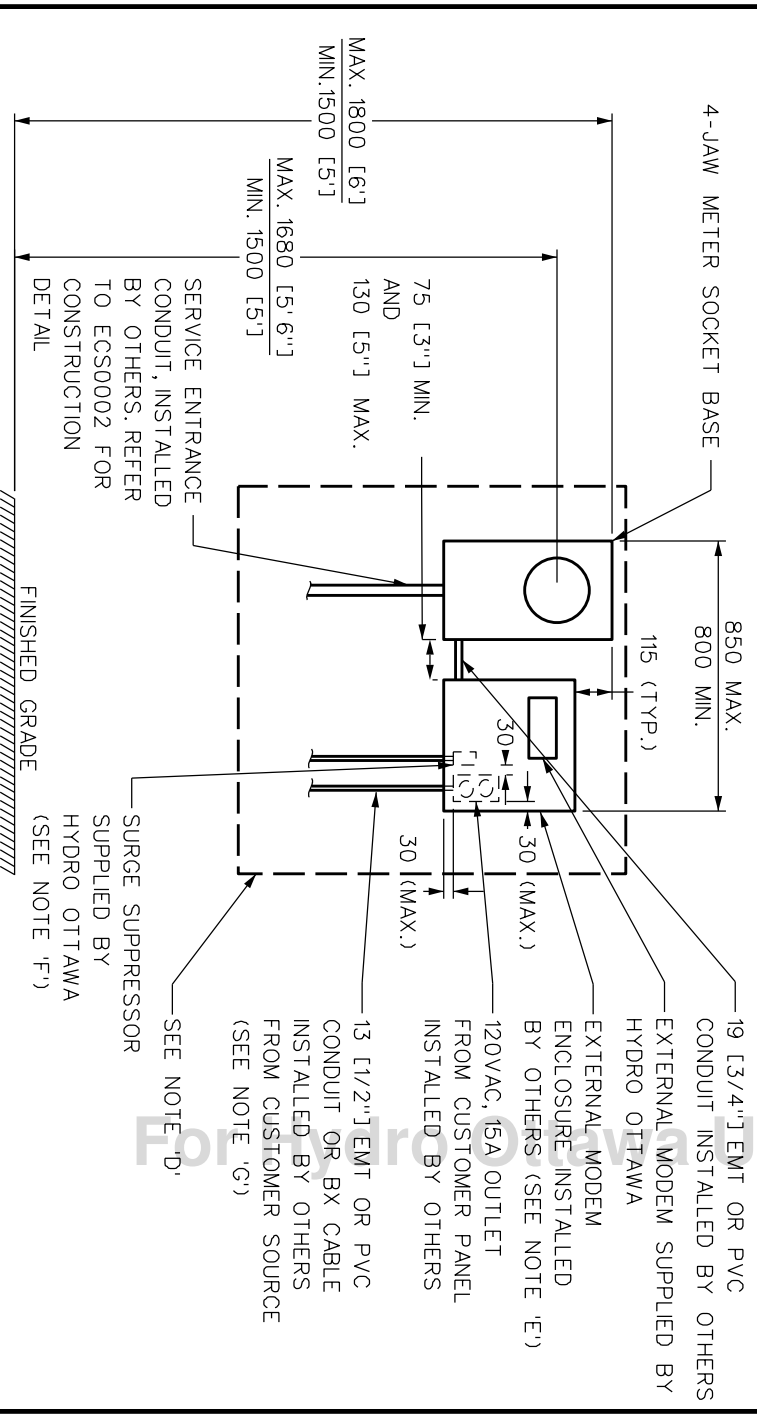


NOTES:

- A. ALL DIMENSIONS ARE IN MILLIMETERS, UNLESS OTHERWISE SPECIFIED.
- B. INSTALLATION SHALL MEET ONTARIO ELECTRICAL SAFETY CODE AND HYDRO OTTAWA REQUIREMENTS.
- C. THE EXTERNAL MODEM ENCLOSURE, SUPPLIED BY THE OWNER, MUST BE CSA APPROVED, HAVING A MINIMUM SIZE OF 400 x 400 x 150 [16" x 16" x 6"] AND SUPPLIED COMPLETE WITH:
 - i. REFER TO HYDRO OTTAWA REVENUE METERING SPECIFICATION GCS0008 FOR MINIMUM NEMA RATING.
 - ii. REMOVABLE BACK PANEL.
 - iii. SIDE HINGED DOOR.
 - iv. EQUIPPED WITH GROUND STUD IN CABINET AND BONDING STUDS ON DOORS.
 - v. PROVISIONS FOR PADLOCK UTILITY LOCKING WITH PADLOCK WITH [3/8"] SHACKLE.
- D. THE 4-JAW METER SOCKET BASE AND ENCLOSURE SHALL BE MOUNTED ON A 1200 X 1200 X 16 [48" X 48" X 5/8"] OR 1200 X 1200 X 19 [48" X 48" X 3/4"] PLYWOOD MOUNTED BOARD, SUPPLIED BY THE OWNER, AND COATED ON ALL SIDES WITH GRAY FIRE RETARDANT PAINT. THE FIRE RETARDANT COATING SHALL PROVIDE A MAXIMUM FLAME SPREAD RATING OF 25 (CLASS A) IN ACCORDANCE WITH UL-CAN/UL-C-5102. THE PLYWOOD MOUNTING BOARD IS EXCLUSIVELY FOR HYDRO OTTAWA'S METERING PLANT EQUIPMENT AND COMMUNICATIONS. (METER SOCKET BASE AND MODEM ENCLOSURE CAN ALSO BE MOUNTED INSIDE NEMA4 OR NEMA4X OUTDOOR RATED ENCLOSURE; SEE HYDRO OTTAWA SPECIFICATION GCS0008 FOR DETAILS).
- E. THE MODEM SHALL BE INSTALLED SUCH THAT THE BOTTOM OF THE ENCLOSURE IS MOUNTED AT THE SAME HEIGHT AS THE BOTTOM OF THE METER BASE. ADDITIONALLY THE DISTANCE FROM THE ENCLOSURE TO THE METER BASE SHALL BE BETWEEN 75 [3"] AND A MAXIMUM OF 130 [5"].
- F. THE 13 [1/2"] EMT OR PVC CONDUIT SHALL CONTAIN A TWO PAIR (4 CONDUCTOR) DEDICATED, DIRECT DIAL ANALOG PHONE LINE FROM THE TELEPHONE ENTRANCE EQUIPMENT TO THE MODEM ENCLOSURE. AN RJ-11 (4-PIN) TELEPHONE JACK SHALL ALSO BE PROVIDED AND TERMINATED ON THE TELEPHONE CABLE WITHIN THE MODEM ENCLOSURE.
- G. THE 120VAC, 15A OUTLET WITH DEDICATED CIRCUIT BREAKER SHALL BE SUPPLIED FROM A DEDICATED CIRCUIT USING CONDUIT MEETING OESC REQUIREMENTS. THE SUPPLY BREAKER SHALL HAVE PROVISIONS TO BE PADLOCK LOCKABLE IN THE CLOSED (ON) POSITION WHILE STILL ALLOWING TRIP-FREE OPERATION OF THE BREAKER UNDER FAULT CONDITIONS.
- H. MINIMUM OF 1000 [3'4"] OF CLEARANCE REQUIRED IN FRONT OF ALL METERING EQUIPMENT.



REV.:	DATE:	PREP:	CHKD:	APPD:	TITLE
REV. 1	DATE: 2016-01-13	PREP: G. MOLNAR	CHKD: S. McNALLY	APPD: C. MALONE	ENGINEERING SPECIFICATION RES 120V/240V, 1PH, 3WS 200A RESIDENTIAL SERVICE METERING USING EXTERNAL MODEM ENCLOSURE WITH TELEPHONE LINE FOR COMMUNICATIONS CONSTRUCTION DETAIL
CHANGE:	UPDATE TITLE				
REV.:	DATE:	PREP:	CHKD:	APPD:	
CHANGE:	DATE: YYYY-MM-DD				

REV.:	DATE:	PREP:	CHKD:	APPD:	TITLE
REV.:	DATE: YYYY-MM-DD	PREP: G. MOLNAR	CHKD: S. McNALLY	APPD: C. MALONE	ENGINEERING SPECIFICATION RES 120V/240V, 1PH, 3WS 200A RESIDENTIAL SERVICE METERING USING EXTERNAL MODEM ENCLOSURE WITH TELEPHONE LINE FOR COMMUNICATIONS CONSTRUCTION DETAIL
CHANGE:	DATE: YYYY-MM-DD				

REV.:	DATE:	PREP:	CHKD:	APPD:	TITLE
REV.:	DATE: YYYY-MM-DD	PREP: G. MOLNAR	CHKD: S. McNALLY	APPD: C. MALONE	ENGINEERING SPECIFICATION RES 120V/240V, 1PH, 3WS 200A RESIDENTIAL SERVICE METERING USING EXTERNAL MODEM ENCLOSURE WITH TELEPHONE LINE FOR COMMUNICATIONS CONSTRUCTION DETAIL
CHANGE:	DATE: YYYY-MM-DD				

REV.:	DATE:	PREP:	CHKD:	APPD:	TITLE
REV.:	DATE: YYYY-MM-DD	PREP: G. MOLNAR	CHKD: S. McNALLY	APPD: C. MALONE	ENGINEERING SPECIFICATION RES 120V/240V, 1PH, 3WS 200A RESIDENTIAL SERVICE METERING USING EXTERNAL MODEM ENCLOSURE WITH TELEPHONE LINE FOR COMMUNICATIONS CONSTRUCTION DETAIL
CHANGE:	DATE: YYYY-MM-DD				

REV.:	DATE:	PREP:	CHKD:	APPD:	TITLE
REV.:	DATE: YYYY-MM-DD	PREP: G. MOLNAR	CHKD: S. McNALLY	APPD: C. MALONE	ENGINEERING SPECIFICATION RES 120V/240V, 1PH, 3WS 200A RESIDENTIAL SERVICE METERING USING EXTERNAL MODEM ENCLOSURE WITH TELEPHONE LINE FOR COMMUNICATIONS CONSTRUCTION DETAIL
CHANGE:	DATE: YYYY-MM-DD				



Hydro Ottawa
www.hydroottawa.com

MCS0080

REV.:	DATE:	PREP:	CHKD:	APPD:	TITLE
1					
1					