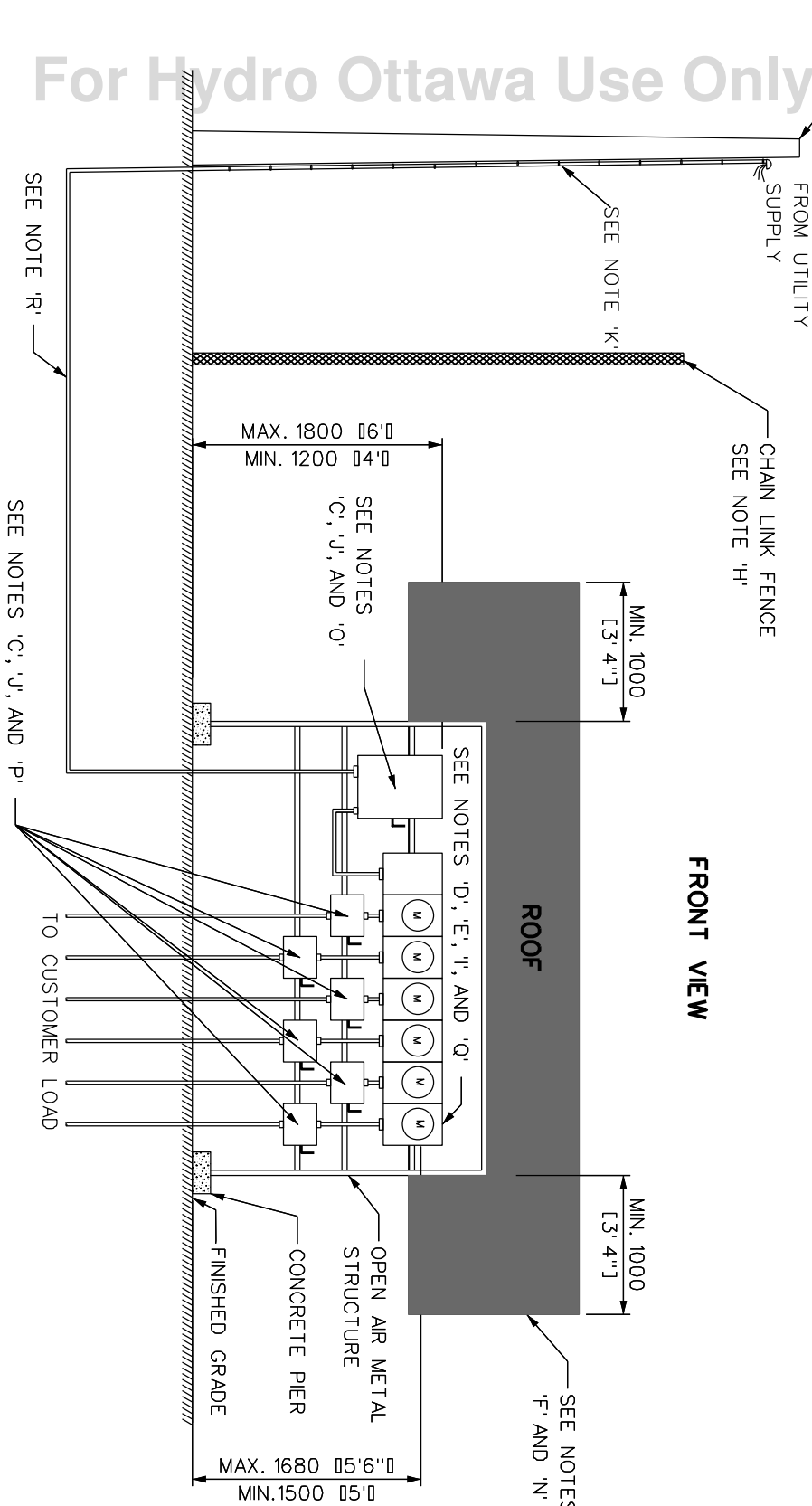
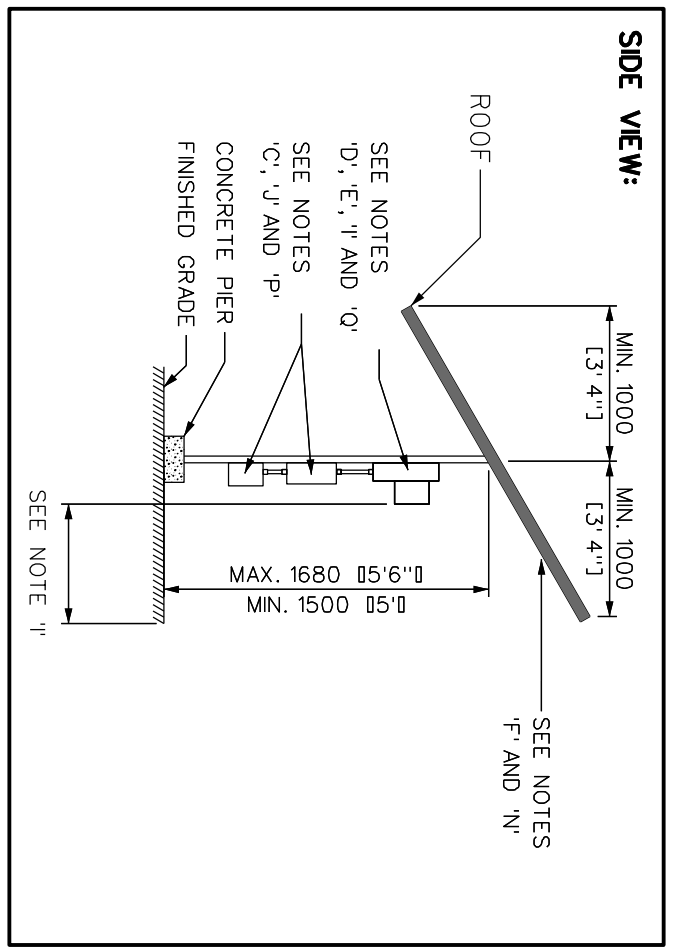


For Hydro Ottawa Use Only Copyright 2016



NOTES:

- A. ALL DIMENSIONS ARE IN MILLIMETERS UNLESS NOTED OTHERWISE.
- B. FOR 1-PHASE SERVICE, MINIMUM 400A SERVICE ENTRANCE.
- C. NOT PERMITTED FOR USE WITH 3-PHASE SERVICE ENTRANCE.
- D. OUTDOOR MOUNTED DISCONNECTS SHALL BE NEMA-3/NEMA-3R RATED OR BETTER.
- E. SIX POSITION GANGED METER THROUGH SHALL BE NEMA-3/NEMA-3R RATED OR BETTER.
- F. UNUSED SOCKETS SHALL BE SECURED USING LEXAN COVER AND LOCKING RING.
- G. OPEN AIR ROOF SHALL EXTEND MINIMUM 1000 [3' 4"] OVER FOOTPRINT OF OPEN AIR STRUCTURE IT SHALL BE PITCHED SUCH THAT WATER DRAINS AT REAR.
- H. REFER TO HYDRO OTTAWA REVENUE METERING SPECIFICATION GCS0008 FOR ADDITIONAL REQUIREMENTS.
- I. GATE SHALL HAVE PROVISIONS TO BE LOCKED WITH TWO PADLOCKS TO ALLOW ACCESS FOR BOTH CUSTOMER AND HYDRO OTTAWA.
- J. MINIMUM OF 1000 [3' 4"] OF CLEARANCE REQUIRED IN FRONT OF METERS.
- K. MINIMUM OF 1000 [3' 4"] OF CLEARANCE REQUIRED IN FRONT OF DISCONNECTS.
- L. OUTDOOR CONDUIT SHALL BE MINIMUM RIGID SCHEDULE 80 PVC WITH EXPANSION COUPLING USED AS REQUIRED.
- M. THE PROPOSED INSTALLATION SHALL COMPLY WITH THE ONTARIO ELECTRICAL SAFETY CODE (OESC) AND IS SUBJECT TO THE ELECTRICAL SAFETY AUTHORITY (ESA) INSPECTION AND APPROVAL.
- N. ENCLOSURES AND OPEN AIR METAL STRUCTURE GROUNDED AS PER HYDRO OTTAWA AND ONTARIO ELECTRICAL SAFETY CODE (OESC) REQUIREMENTS.
- O. THE ROOF SHALL MEET THE ONTARIO BUILDING CODE (OBC) REQUIREMENTS.
- P. TOP OF SERVICE ENTRANCE DISCONNECT SHALL BE MOUNTED AT THE FOLLOWING HEIGHTS:
 - i. MINIMUM - 1200 [4']
 - ii. MAXIMUM - 1800 [6']
- Q. TOP OF INDIVIDUAL SUB-SERVICE DISCONNECT SHALL BE MOUNTED AT THE FOLLOWING HEIGHTS:
 - i. MINIMUM - 900 [3']
 - ii. MAXIMUM - 1800 [6']
- R. GANGED METER TROUGH SHALL BE MOUNTED SUCH THAT THE CENTER OF METER SOCKET IS AT THE FOLLOWING HEIGHTS, ABOVE FINISHED GRADE:
 - i. MINIMUM - 1500 [5']
 - ii. MAXIMUM - 1880 [6' 6"]
- S. UTILITY SUPPLY CAN ALSO ORIGINATE FROM PAD-MOUNTED TRANSFORMER.
- T. EACH METER SOCKET AND SECONDARY SUB-SERVICE SERVICE ENTRANCE DISCONNECT SHALL BE CLEARLY AND PERMANENTLY LABELLED TO INDICATE EACH CUSTOMER BEING SUPPLIED.
- U. ALL SUB-SERVICES THAT TAKE SUPPLY FROM GANGED METER THROUGH ARE LIMITED TO 200A.

REVISIONS		PREP	CHKD	APPD	TITLE
REV:	DATE:	JD	SMC	CSM	
1	2016-02-05				ENGINEERING SPECIFICATION COM 120V/240V 1PH 3W, 5600A SECONDARY METERED UTILITY TOWER SERVICE METER WITH 6-POSITION GANGED METER TROUGH CONSTRUCTION DETAIL
CHANGE:	UPDATE TITLE				
CHANGE:	UPDATE NOTES				
REV:	DATE:				
CHANGE:	DATE:				
REV:	DATE:				
CHANGE:	DATE:				

PREP	CHKD	APPD	TITLE
JD	SMC	CSM	
			ENGINEERING SPECIFICATION COM 120V/240V 1PH 3W, 5600A SECONDARY METERED UTILITY TOWER SERVICE METER WITH 6-POSITION GANGED METER TROUGH CONSTRUCTION DETAIL
PREP:	G. MOLNAR	(E.I.T.)	
CHKD:	S. McNALLY	(E.I.T.)	
APPD:	C. MALONE	P. Eng.	
DATE:	2014-09-03		
SCALE:	N.T.S. @ ANSIB		