

FIG. 1 SERVICE EQUIPMENT ELEVATION VIEW

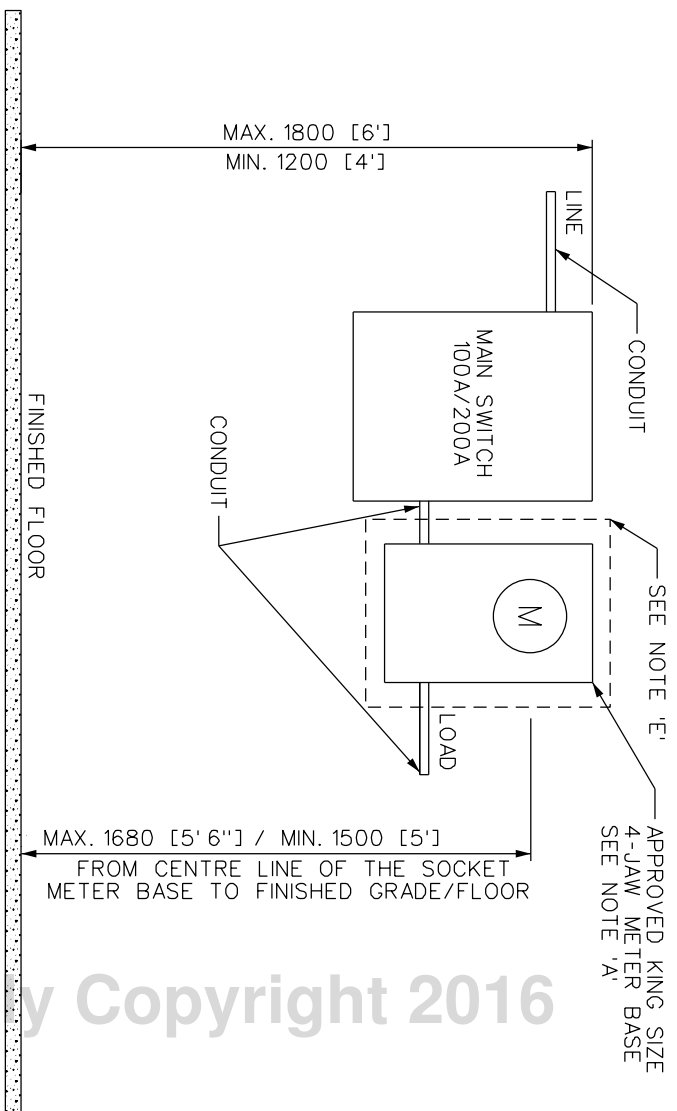
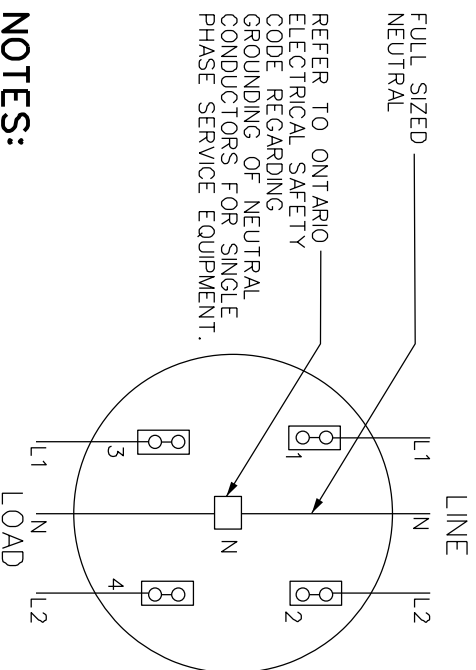


FIG. 2 120/240V, 1PH, 3W, 1-100A OR 1-200A, KING SIZE METER SOCKET BASE



VOLTAGE AT SOCKET					
TERMINAL NO.	1-2	2-3	1-N	1-4	2-N
NORMAL	240V	0V	120V	0V	120V

NOTES:

- A. FOR METER SOCKET BASE AND INDIVIDUAL SERVICE REFER TO HYDRO OTTAWA REVENUE METERING SPECIFICATION GCS0008, TABLE 1.
- B. ALL DIMENSIONS ARE IN MILLIMETERS, UNLESS OTHERWISE SPECIFIED.
- C. MINIMUM OF 1500 [5'] OF CLEARANCE REQUIRED IN FRONT OF ALL METERING EQUIPMENT.
- D. RIGID SCHEDULE 80 PVC CONDUIT TO BE USED IF INSTALLED OUTDOOR LOCATION; EMT CONDUIT USED IF INSTALLED IN INDOOR LOCATION; PVC EXPANSION COUPLERS USED AS PER ONTARIO ELECTRICAL SAFETY CODE (OESC).
- E. PLYWOOD MOUNTING SURFACE PAINTED WITH GRAY FIRE RETARDANT PAINT FOR MINIMUM 900 x 900 x 16 [36" x 36" x 5/8"] OR 900 x 900 x 19 [36" x 36" x 3/4"] EXCLUSIVE FOR HYDRO OTTAWA METERING EQUIPMENT, IF NOT INSTALLED DIRECTLY ON CONCRETE WALL, NEMA RATED ENCLOSURE, OR CUSTOMER BUILT ENCLOSURE. SEE HOL SPECIFICATION GCS0008 FOR MORE INFORMATION.

REV. NO.	DATE	TITLE	PREP	CHKD	APPD
REV: 1	DATE: 2016-01-13	CHANGE: UPDATE TITLE	JD	SMC	CSM
REV: 2	DATE: YYYY-MM-DD	CHANGE:			
REV: 3	DATE: YYYY-MM-DD	CHANGE:			

Hydro Ottawa

 www.hydroottawa.com

PREP: M. MALONEY (E.L.T.)

 CHKD: S. McNALLY (E.L.T.)

 APPD: C. MALONE P.ENG

 DATE: 2014-10-29

 SCALE: N.T.S. @ ANSIA

ENGINEERING SPECIFICATION

COM 120V/240V, 1PH, 3W, ≤200A

SECONDARY SERVICE WITH

METER SOCKET WIRING DETAIL

CONSTRUCTION DETAIL

NO: **MCS0091**

1	REV:
1	1