

FIG. 1 SERVICE EQUIPMENT ELEVATION VIEW

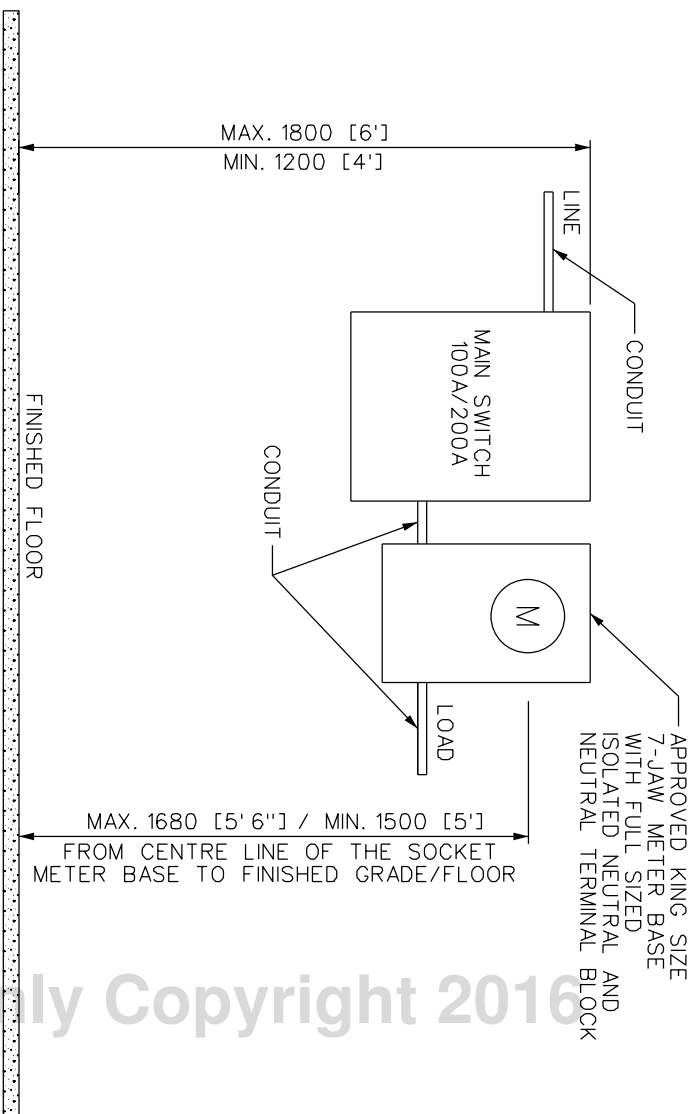
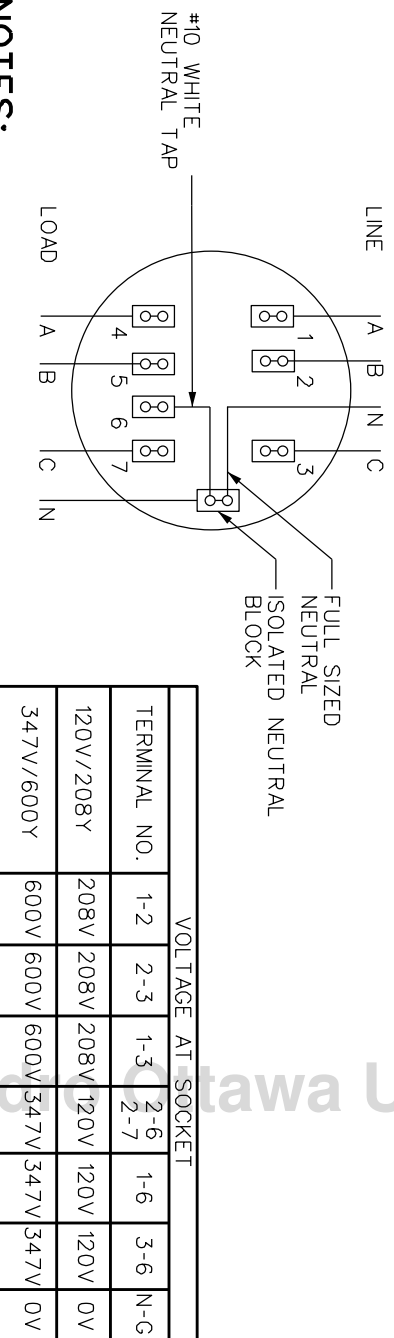


FIG. 2 METER SOCKET BASE WIRING DIAGRAM:



NOTES:

- FOR METER SOCKET BASE REFER TO HYDRO OTTAWA REVENUE METERING SPECIFICATION GCS0008, TABLE 5.
- FULL SIZED NEUTRAL CONDUCTOR TERMINATED AT FIRST CUSTOMER OWNED OPERABLE DEVICE AFTER METER BASE.
- ALL DIMENSIONS ARE IN MILLIMETERS, UNLESS OTHERWISE SPECIFIED.
- MINIMUM OF 1500 [5'] OF CLEARANCE REQUIRED IN FRONT OF ALL METERING EQUIPMENT.
- RIGID SCHEDULE 80 PVC CONDUIT TO BE USED IF INSTALLED INDOOR LOCATION; ENT CONDUIT USED IF INSTALLED IN INDOOR LOCATION. PVC EXPANSION COUPLERS USED AS PER ONTARIO ELECTRICAL SAFETY CODE (OESC).

REVISIONS	PREP	CHKD	APPD	TITLE
REV: 1	DATE: 2016-01-13	JD	SMC	CSM
CHANGE: UPDATE TITLE				
REV: CHANGE:	DATE: YYYY-MM-DD			
REV: CHANGE:	DATE: YYYY-MM-DD			
REV: CHANGE:	DATE: YYYY-MM-DD			

<p>www.hydroottawa.com</p>	<p>PREP: M. MALONEY</p> <p>CHKD: S. McNALLY (E.L.T.)</p> <p>APPD: C. MALONE P.ENG</p> <p>DATE: 2014-12-15</p> <p>SCALE: N.T.S. & ANSIA</p>	<p>NO:</p> <p>ENGINEERING SPECIFICATION COM 120V/208Y OR 347V/600Y 3PH, 4W, 100A TO 200A SECONDARY SERVICE WITH METER SOCKET CONSTRUCTION AND WIRING DETAIL</p> <p>CONSTRUCTION DETAIL</p>
----------------------------	--	--

<p>MCS0096</p>	<p>REV: 1</p> <p>OF 1</p>	<p>REV: 1</p>
-----------------------	---------------------------	---------------

For Hydro Ottawa Use Only Copyright 2016