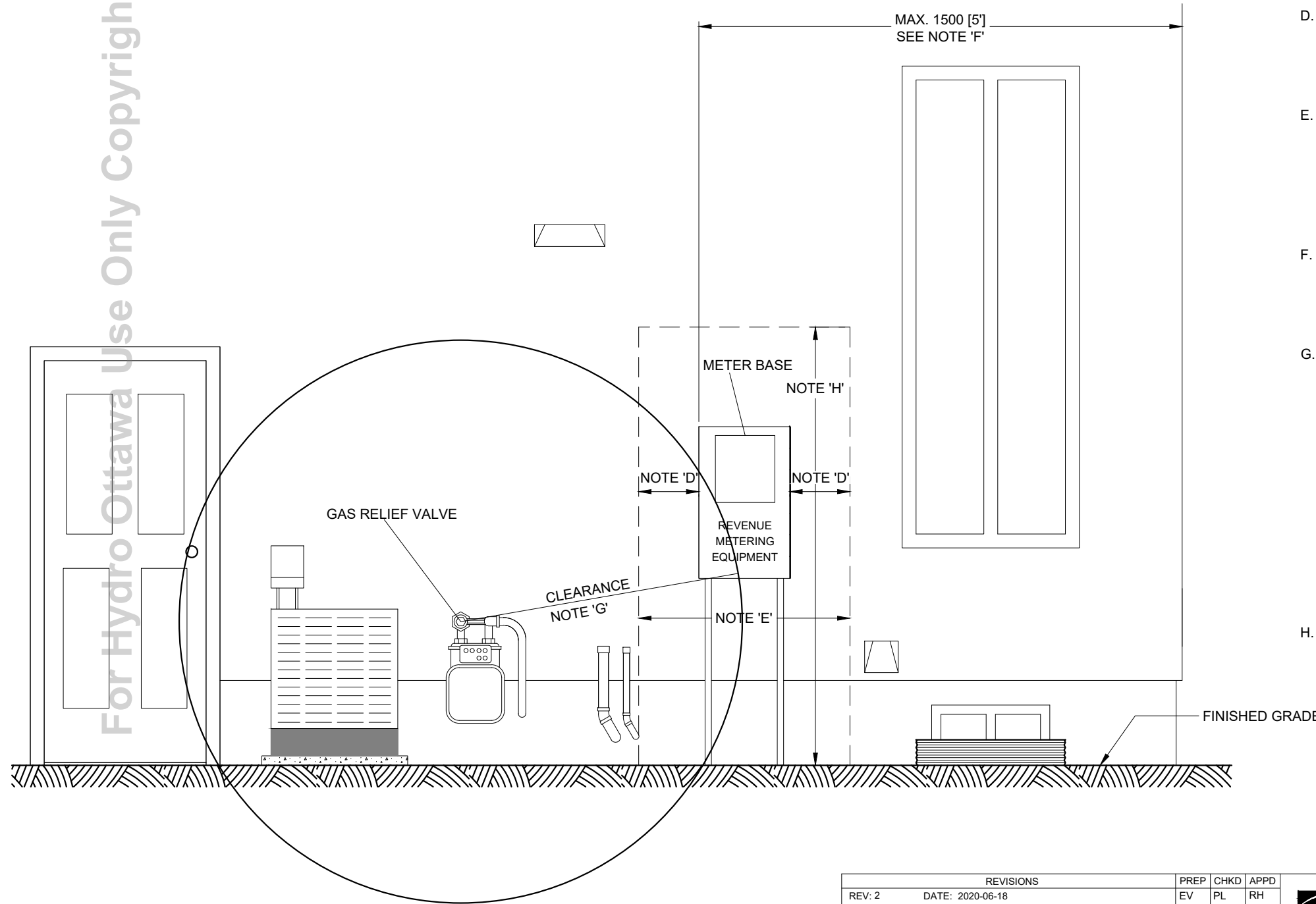


For Hydro Ottawa Use Only Copyright 2023




NOTES:

- A. ALL DIMENSIONS ARE IN MILLIMETRES, UNLESS OTHERWISE SPECIFIED.
- B. THE INTENT OF THE CLEARANCES SPECIFIED IS TO PROVIDE SUFFICIENT SPACE FOR THE USE OF HYDRO OTTAWA PERSONNEL ACCESSING THE REVENUE METERING EQUIPMENT.
- C. REFER TO HYDRO OTTAWA SPECIFICATION MCS0105 FOR MORE INFORMATION ON REQUIRED CLEARANCES IN FRONT OF REVENUE METERING EQUIPMENT.
- D. MINIMUM OF 300 [1'] OF CLEARANCE BETWEEN REVENUE METERING EQUIPMENT AND DOORS, WINDOWS, WINDOW-WELLS, HVAC, FENCE, SHED, C/W OVERHANG, EXHAUST VENT, AIR INTAKE, FILL SPOUTS FOR OIL TANK, DECK ETC.
- E. CLEAR WORKING AND STANDING SPACE ENTIRELY ON THE PROPERTY OF THE CUSTOMER (MINIMUM 1000 (3'4")) SHALL BE PROVIDED IN FRONT OF ALL METERING EQUIPMENT. DOOR AND/OR FENCE GATE SHALL BE PROVIDED WITH DOOR STOP TO MAINTAIN THE CLEAR WORKING SPACE AND AVOID CONTACT WITH THE REVENUE METERING EQUIPMENT WHERE APPLICABLE. GAS METERS SHALL NOT BE INSTALLED WITHIN THIS SPACE.
- F. THE METER BASE SHALL BE LOCATED OUTDOORS, IN A LOCATION APPROVED BY HOL, NORMALLY 1500 [5'] FROM THE SIDE OR FRONT OF THE RESIDENCE'S CLOSEST CORNER TO THE POINT OF SUPPLY AND IN FRONT OF ANY EXISTING OR PROPOSED FENCE.
- G. MINIMUM RADIAL CLEARANCE REQUIREMENTS TO A COMBUSTIBLE GAS RELIEF DISCHARGE DEVICE OR VENT NORMALLY INSTALLED ON THE GAS SUPPLY LINE ARE AS FOLLOWS:
 - 1) 1m FOR NATURAL GAS AND
 - 2) 3m FOR PROPANE GAS

CSA B149.1 - RELIEF DEVICE IS A DEVICE DESIGNED TO OPEN TO PREVENT A RISE OF GAS PRESSURE IN EXCESS OF A SPECIFIED VALUE DUE TO AN EMERGENCY OR ABNORMAL CONDITION. THE ABOVE SEPARATION FOR NATURAL GAS (1m) MAY BE REDUCED TO 300mm PROVIDED THAT A REGULATOR IS EQUIPPED WITH OVERPRESSURE SHUTOFF CAPABILITY. THESE DEVICES ARE LABELED AS CERTIFIED "OPSO" (OVERPRESSURE SHUT-OFF) OR "OPCO" (OVERPRESSURE CUT-OFF), WITH LIMITED RELIEF ("LR") OR NO RELIEF ("P").
- H. MINIMUM OF 2130 (7') VERTICAL HEIGHT CLEARANCE FROM GRADE TO WALL PENETRATIONS (WINDOWS, EXHAUST VENTS, AIR INTAKES, ETC.) LOCATED ABOVE REVENUE METERING EQUIPMENT TO MAINTAIN SAFE WORKING SPACE.

2023-05-12 1:11 PM

REVISIONS		PREP	CHKD	APPD	 www.HYDROOTTAWA.COM	TITLE		
REV: 2	DATE: 2020-06-18 CHANGE: UPDATED NOTES AND REDUCED CLEARANCES	EV	PL	RH		ENGINEERING SPECIFICATION AGR/COM/DER/RES MINIMUM OUTDOOR CLEARANCES NEXT TO REVENUE METERING EQUIPMENT CONSTRUCTION DETAIL	NO:	1 OF 1
REV: 3	DATE: 2021-05-25 CHANGE: UPDATED NOTE 'F' AND NOTE 'G'	EV	PL	RH				
REV: 4	DATE: 2023-05-12 CHANGE: INCORPORATED ESA DB-03-19-V2; ADDED GAS VALVE CLEARANCE	LS	YB/ PW	RH				
					PREP: G. MOLNAR CHKD: S. McNALLY P.Eng APPD: C. MALONE P.Eng DATE: 2016-03-24 SCALE: N.T.S. @ ANSI B	REV:		