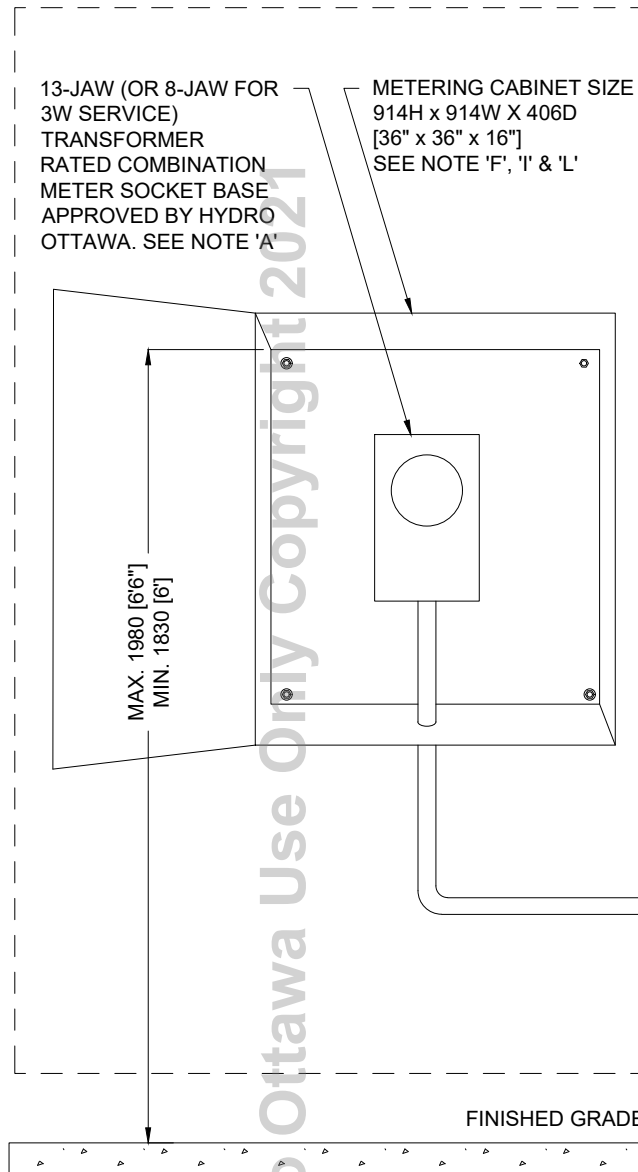
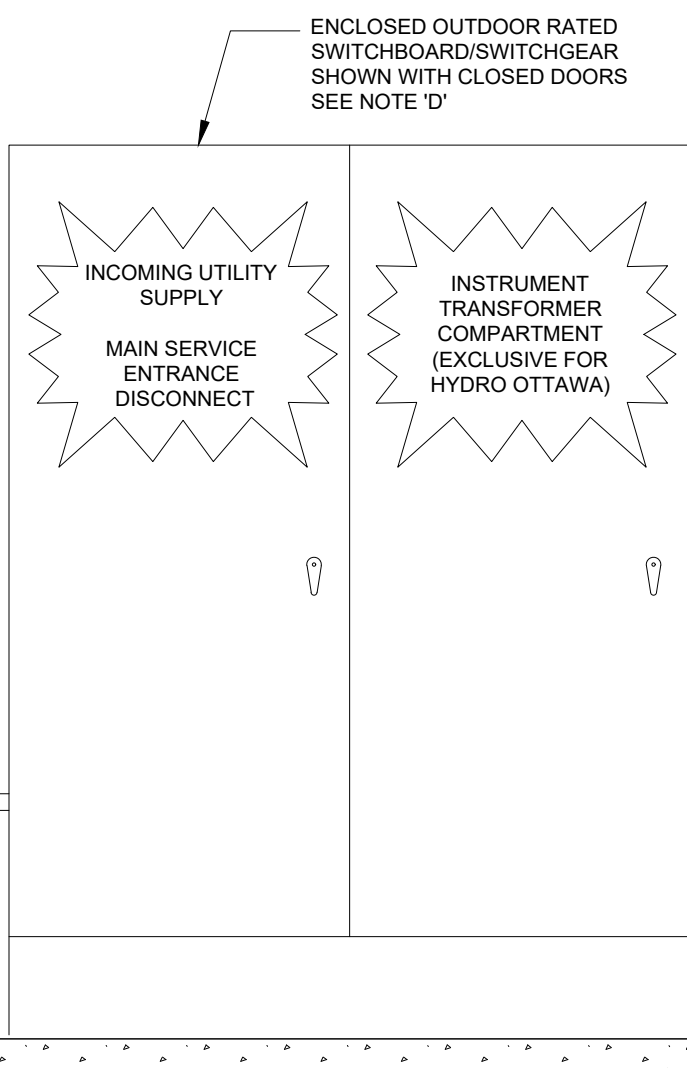
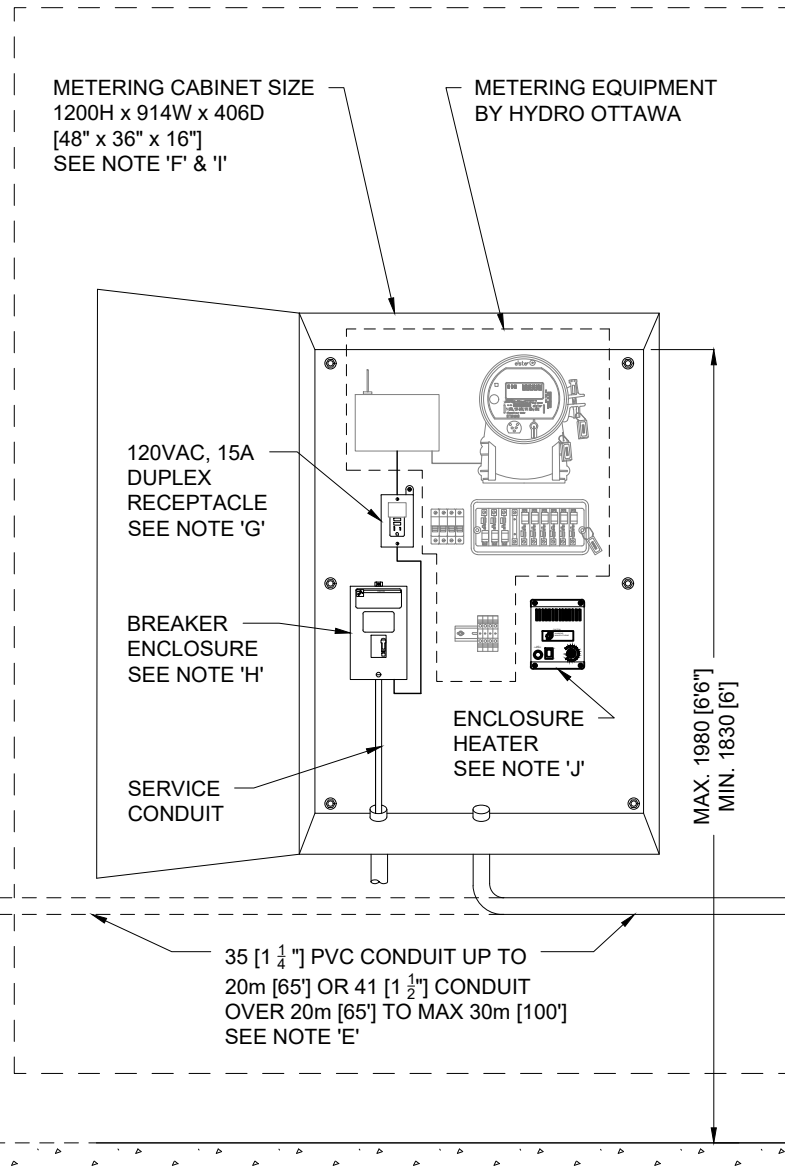


OPTION 1



OPTION 2



NOTES:

- A. REFER TO HYDRO OTTAWA GCS0008 OR GCS0032 FOR SECONDARY OR PRIMARY REVENUE METERING SPECIFICATION AND TABLE 1 BASED ON SERVICE RATING.
- B. ALL DIMENSIONS ARE IN MILLIMETRES, UNLESS OTHERWISE SPECIFIED.
- C. REFER TO MCS0105 FOR MINIMUM CLEARANCE IN FRONT OF METERING EQUIPMENT.
- D. REFER TO ECS0043 FOR TYPICAL CUSTOMER OWNED PRIMARY SWITCHGEAR LAYOUT.
- E. CONDUIT SHALL INCORPORATE NO MORE THAN THREE 90° BENDS/FITTINGS PER RUN.
- F. NEMA 4 ENCLOSURE MOUNTED TO PERMANENT STRUCTURE TO SUIT C/W:
 1. PROVISIONS FOR PADLOCKING
 2. REMOVABLE INNER PANEL C/W MOUNTING HARDWARE
 3. BONDING STUD ON DOOR C/W BONDING STRAP (#10 AWG MIN)
 4. ENCLOSURE GROUND STUD
- G. 120VAC, 15A DUPLEX RECEPTACLE C/W GALVANIZED UTILITY BOX, COVER AND WIRES FROM BREAKER ENCLOSURE TO MEET OESC.
- H. BREAKER ENCLOSURE MINIMUM 30A, 120VAC, 2 POSITIONS C/W TWO (2) 15A SINGLE POLE BREAKERS, ENCLOSURE SHALL BE FED POWER FROM PUBLIC LOAD PANEL USING DEDICATED 30A, SINGLE POLE BREAKER WITH LOCKABLE MEAN TO LOCK THE BREAKER IN THE 'CLOSED' POSITION WITH A STANDARD HYDRO PADLOCK WHILE STILL ABLE TO MAINTAIN TRIP-FREE OPERATION IN THE EVENT OF A FAULT.
- I. BONDING AND GROUNDING OF ENCLOSURE TO MEET OESC.
- J. 120VAC HEATER CAPABLE OF MAINTAINING AT 10°C THE TEMPERATURE INSIDE THE ENCLOSURE WITH A -20°C AMBIENT TEMPERATURE, WIRING TO BREAKER ENCLOSURE TO MEET OESC.
- K. METERING EQUIPMENT CAN BE INSTALLED WITHIN A SWITCHBOARD OR SWITCHGEAR METERING COMPARTMENT IF APPROVED BY HYDRO OTTAWA. THE METERING COMPARTMENT DIMENSIONS, ACCESSIBILITY AND FUNCTIONAL REQUIREMENTS SHALL BE IDENTICAL TO THE METERING CABINET REQUIREMENTS.
- L. METERING CABINET CAN BE OMITTED FOR OUTDOOR TYPE INSTALLATION IN RESTRICTED OR CONTROLLED ACCESS AREA.

35 [1 1/4"] PVC CONDUIT UP TO 20m [65'] OR 41 [1 1/2"] CONDUIT OVER 20m [65'] TO MAX 30m [100'] SEE NOTE 'E'

FINISHED GRADE

TABLE 1: REVENUE METER REQUIREMENTS

| SERVICE RATING | METERING OPTION |
|--|------------------|
| 120V/208Y >200 TO 600A | 1 ^(K) |
| 120V/208Y ≥ 800A OR 347V/600Y >200A OR PRIMARY SERVICE | 2 ^(K) |

TABLE 2: CHECK METER REQUIREMENTS

| SERVICE RATING | METERING OPTION |
|--|---|
| 120V/208Y >200 TO 600A | 1 ^(K) |
| 120V/208Y ≥ 800A OR 347V/600Y >200A OR PRIMARY SERVICE | 1 ^(K) OR 2 ^(K) WITH HOL SUITE METERING |

| REVISIONS | | | | PREP | CHKD | APPD |
|-----------|-------|--|--|------|------|------|
| REV: | DATE: | | | | | |
| CHANGE: | | | | | | |
| REV: | DATE: | | | | | |
| CHANGE: | | | | | | |
| REV: | DATE: | | | | | |
| CHANGE: | | | | | | |

HydroOttawa
WWW.HYDROOTTAWA.COM

PREP: E. VEH
CHKD: P. LEMAY
APPD: R. HARRINGTON P. Eng
DATE: 2021-05-25
SCALE: N.T.S. @ ANSI B

| | |
|-------|--|
| TITLE | ENGINEERING SPECIFICATION 120V/208Y AND 347V/600Y, 3PH, 4W, >200A OR PRIMARY SERVICES INTERVAL METERING OUTDOOR TYPE INSTALLATION CONSTRUCTION DETAIL |
| NO: | MCS0116 |
| REV: | 1 OF 1 |
| REV: | 0 |

LAST SAVED: 2021-05-25 2:04 PM