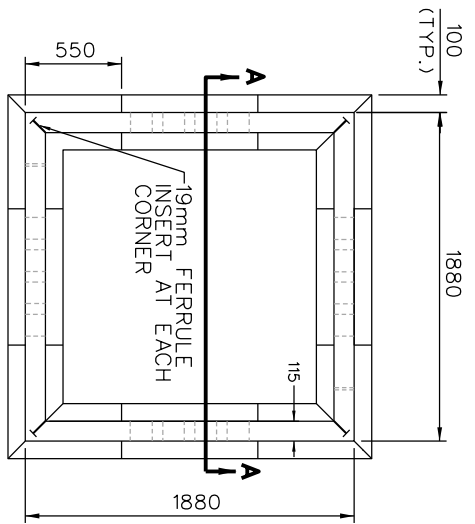


SPECIFIED LIVE LOADING REQUIREMENTS	
DISTRIBUTED LATERAL LOAD ①	25 kN/m <sup>2</sup>
TOP SLAB UNIFORMLY DISTRIBUTED LOAD ②	60 kN/m <sup>2</sup>
TOP SLAB POINT LOAD ③	70 kN

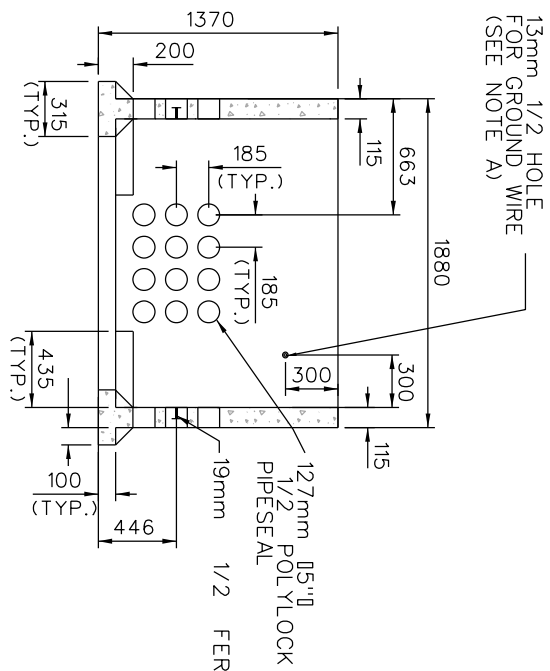
① BASED ON LATERAL LOADS FROM WATER TABLE AT SURFACE, SOIL AND SURCHARGE FROM WHEEL LOAD.

② BASED ON THE WEIGHT OF A 2500kVA TRANSFORMER OF 73.87kN (7530kg).

③ BASED ON WHEEL LOAD OF C1-625 ONTARIO TRUCK FROM CAN/CSA S6-06 LATEST EDITION.

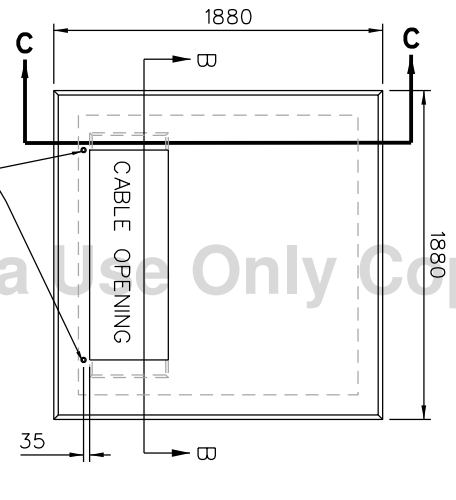


PLAN VIEW - BASE

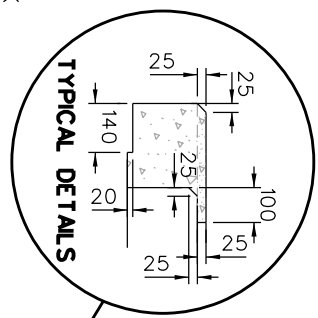


SECTION A-A TYPICAL

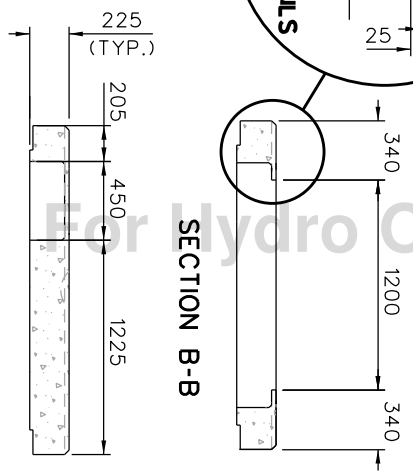
- NOTES:**
- A. HOLE FOR GROUND WIRE TO BE LABELED WITH GROUND SYMBOL USING GREEN PAINT. SYMBOL TO MEASURE 150 x 150. SAMPLE: N.T.S.
  - B. ALL DIMENSIONS IN MILLIMETERS UNLESS OTHERWISE INDICATED
  - C. CONCRETE - 35 MPa. AND SHALL MEET REQUIREMENTS OF CSA A23.1 LATEST EDITION FOR CONCRETE EXPOSED TO DE-ICING CHEMICALS. AIR CONTENT 5-8%, C1-CLASS OF EXPOSURE.
  - D. REINFORCING STEEL - 400MPa, MINIMUM 40mm COVER.
  - E. PAD SHALL BE PROVIDED WITH SWIFT LIFT SYSTEM TO ACCOMMODATE INSTALLATION AND REMOVAL.



PLAN VIEW - PAD



TYPICAL DETAILS



SECTION B-B

SECTION C-C  
KNOCK-OUT DETAIL

REV.	DATE	BY	CHKD	APPD
REV: 2	DATE: 2008-11-11	GP	PL	CSM
CHANGE:	NOTE D ADDED DRAWING CLEANUP			
REV: 3	DATE: 2010-05-27	FB	RW	CSM
CHANGE:	TITLE CHANGE			
REV: 4	DATE: 2015-05-25	MM	RW	CSM
CHANGE:	REVISED TABLE & NOTES			

**HydroOttawa**  
www.hydroottawa.com

PREP: G. GOFORTH  
CHKD: C. PROULX  
APPD: C. MALONE  
DATE: 2002-03-08  
SCALE: N.T.S. @ ANSIA

TITLE  
**ENGINEERING SPECIFICATION**  
**TRANSFORMER BASE & PAD**  
**3 PHASE 150kVA-2500kVA**

CONSTRUCTION DETAIL

NO: **UCS0001**

1	REV:
1	OF
4	