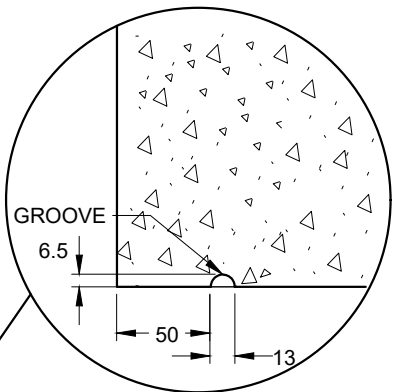
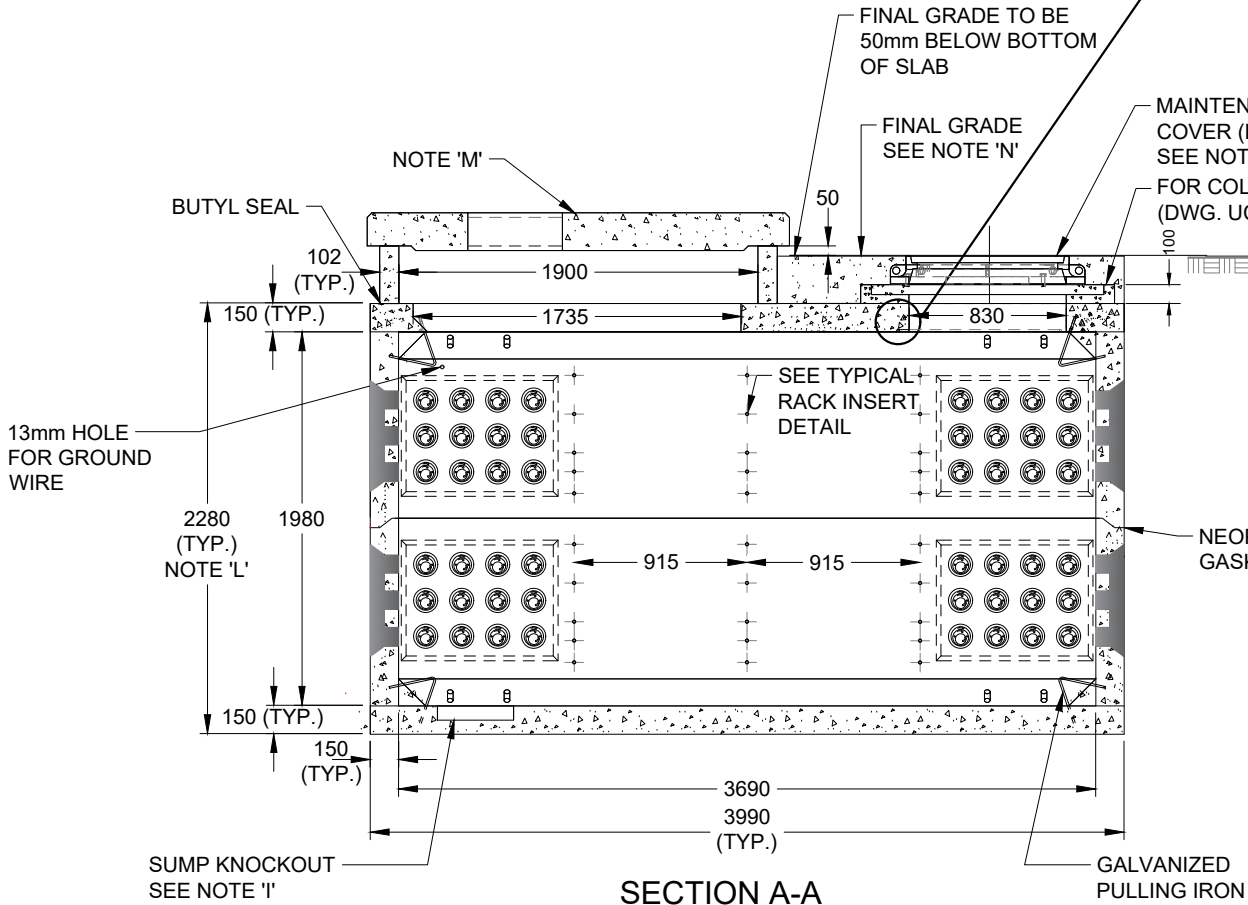


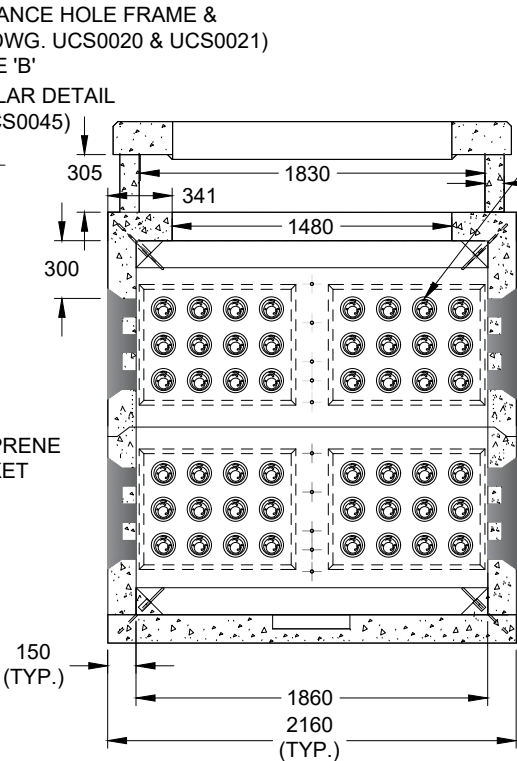
PLAN VIEW



DRIP RING
DETAIL



SECTION A-A

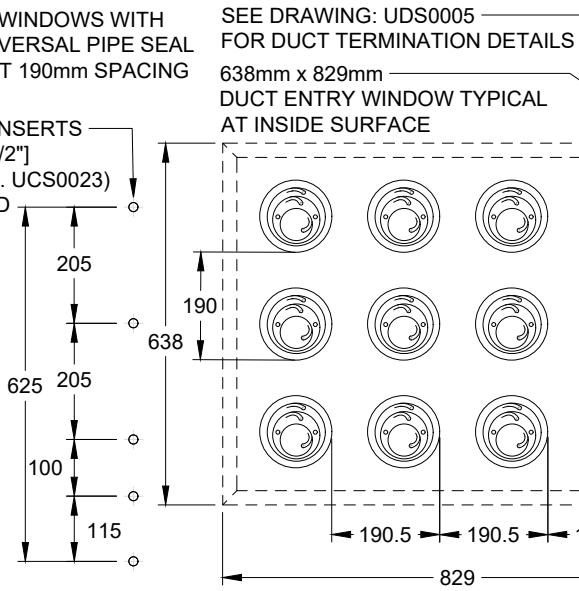


SECTION B-B

8 DUCT ENTRY WINDOWS WITH
12 - 127 mm UNIVERSAL PIPE SEAL
PER WINDOW AT 190mm SPACING

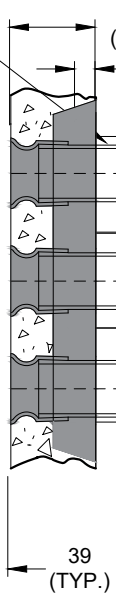
102 (TYP.)

CONCRETE INSERTS
FOR 13mm [1/2"]
BOLTS (DWG. UCS0023)
QTY:80 REQ'D



TYPICAL RACK INSERT
DETAIL

TYPICAL DUCT ENTRY
WINDOW DETAIL



NOTES:

- A. ALL DIMENSIONS IN MILLIMETERS UNLESS OTHERWISE NOTED.
- B. SUPPLIED BY HYDRO OTTAWA FOR HYDRO OTTAWA OWNED MAINTENANCE HOLES.
- C. LOADS CAN/CSA-S6-06 CL-625-ONT TRUCK LIVE LOADING. SOIL - 1500mm MAX 300mm MIN. WATER TABLE AT SURFACE.
- D. CONCRETE - 50 MPa AND SHALL MEET REQUIREMENTS OF CSA A23.1/A23.2 LATEST EDITION FOR CONCRETE EXPOSED TO DE-ICING CHEMICALS. AIR CONTENT 5-8% C1 CLASS OF EXPOSURE.
- E. REINFORCING STEEL - 400 MPa, MIN 40mm CONCRETE COVER OVER STEEL.
- F. GENERAL REQUIREMENTS FOR METHODS AND MATERIALS SHALL CONFORM TO CAN/CSA-A23.1/A23.2 (CONCRETE MATERIALS AND METHODS OF CONCRETE CONSTRUCTION / METHODS OF TEST AND STANDARD PRACTICES FOR CONCRETE.
- G. SEE HYDRO OTTAWA CONSTRUCTION SPECIFICATION GCS0005 SECTION 6.2 FOR INSTALLATION PROCEDURE.
- H. INSERTS TYPE 11/4 LEL - DH OR EQUIVALENT TO BE INSTALLED ABOVE TOP SECTION WINDOWS AND BELOW BOTTOM SECTION WINDOWS ON SIDE WALL.
- I. SUMP KNOCKOUT IN FLOOR TO BE 400mm x 400mm [16" x 16"].
- J. DUCT BANK REINFORCING TO BE DOWELED INTO MAINTENANCE HOLE WALL.
- K. GROUNDING SHALL BE AS PER HYDRO OTTAWA APPLICABLE SPECIFICATION.
- L. TOTAL HEIGHT OF MAINTENANCE HOLE MAY BE GREATER DEPENDING ON SUPPLIER. INSTALLER TO CONFIRM HEIGHT TO ENSURE PROPER SETTING DEPTH.
- M. MAINTENANCE HOLE SHOWN WITH SF6 SWITCHGEAR PAD. FOR PAD DETAIL SEE SPECIFICATION UCS0026. FOR USE OF MAINTENANCE HOLE WITH PMH STYLE SWITCHGEAR PAD SEE SPECIFICATION UCS0027. FOR USE OF MAINTENANCE HOLE WITH TRANSFORMER SEE SPECIFICATION UCS0035.
- N. PRIOR TO THE INSTALLATION OF ANY PLANT BY HYDRO OTTAWA, GRADE TO BE WITHIN 150MM OF FINAL GRADE FOR 3M AROUND MAINTENANCE HOLE.

REVISIONS				HydroOttawa WWW.HYDROOTTAWA.COM	TITLE		
REV: 15	DATE: 2010-05-27	PREP	CHKD	APPD	ENGINEERING SPECIFICATION MAINTENANCE HOLE PRECAST 2 WAY SWITCHING 612 CONSTRUCTION DETAIL		
CHANGE: TITLE CHANGE		FB	RW	CSM			
REV: 16	DATE: 2017-07-17	EV	MBW	BDH			
CHANGE: ADD DUCT ENTRY, REVISE NOTES 'D', 'F', 'H', 'J', 'K' ADD NOTE 'L', REVISE KNOCKOUT WINDOW					PREP: G.MOLNAR CHKD: C. PROULX		
REV: 17	DATE: 2025-04-09	EV/LS	MBW/ MW	RH	APPD: C. MALONE P. Eng.		
CHANGE: UPDATE NOTE 'M', CHANGED 'MAINTENANCE HOLE' TO 'MAINTENANCE HOLE'; UPDATE A-A NOTE, UCS0018 NOW UCS0045					DATE: 2003-02-25 SCALE: N.T.S. @ ANSI B		
					NO:		1 OF 1
					REV:		17