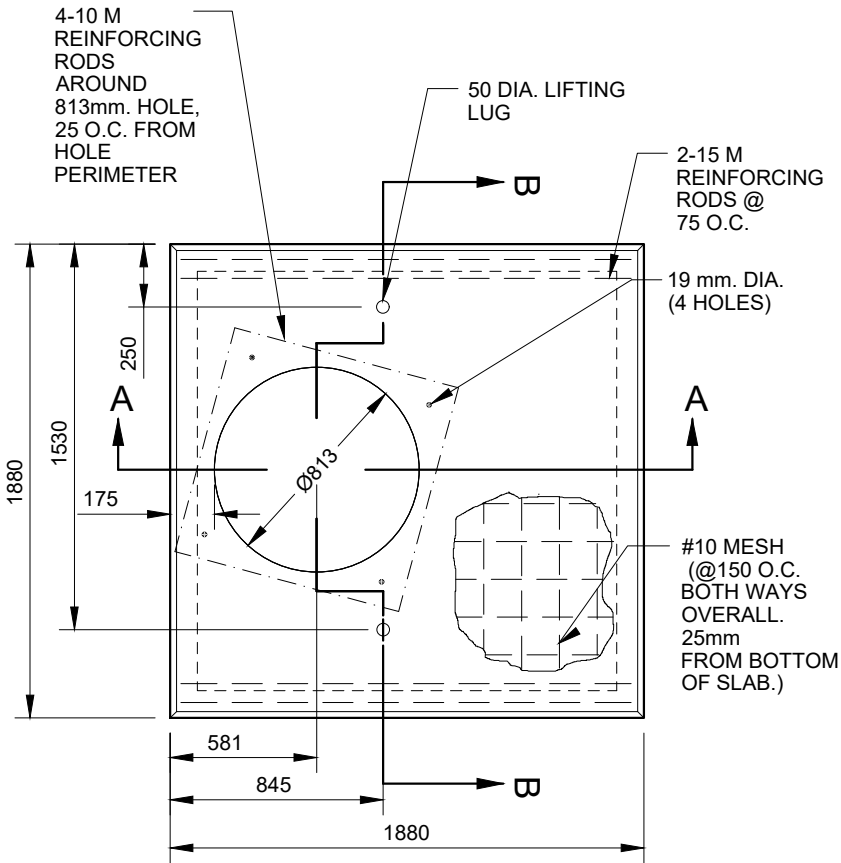
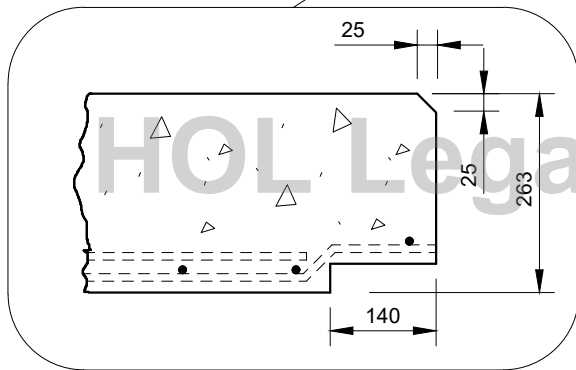
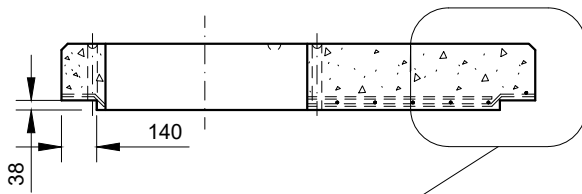


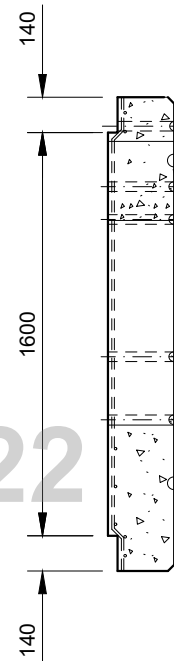
4.2.3 TECH STD AND MAT --> 01 STDS --> 01 HOL --> U-UNDERGROUND --> C-CHAMBER



PLAN VIEW - PAD



SECTION A-A



SECTION B-B

NOTES:

- A. CONCRETE TO BE 35 MPa 28 DAYS TEST AND SHALL MEET REQUIREMENTS OF CSA A23.1 FOR CONCRETE EXPOSED TO DE-ICING CHEMICALS.
- B. SLAB WHEN ON FOUNDATION SHOULD BE CAPABLE OF SUPPORTING EQUIPMENT WEIGHING UP TO 8900 N (2000 LBS.)
- C. SLAB SHOULD BE CAPABLE OF BEING LIFTED AT THE LIFTING LUGS WITHOUT BREAKING OR CRACKING.
- D. NOT TO BE USED ON ROADWAYS.
- E. ALL DIMENSIONS IN MILLIMETRES (mm.) UNLESS OTHERWISE SPECIFIED.
- F. FOR USE WITH HYDRO 3 PHASE TRANSFORMER (DWG. UCS0001)

REVISIONS	PREP	CHKD	APPD
REV: 2 DATE: 2007-09-28 CHANGE: NOTE RE: CONCRETE	CP	CP	CSM
REV: 3 DATE: 2010-08-27 CHANGE: TITLE CHANGE	FB	RW	CSM
REV: 4 DATE: 2022-12-08 CHANGE: UPDATED NOTE 'A' MADE LEGACY	LS	ML	MW



PREP: G. MOLNAR
 CHKD: G. MAGILL
 APPD: C. MALONE P.Eng
 DATE: 2002-04-04
 SCALE: N.T.S. @ ANSI A

TITLE	ENGINEERING SPECIFICATION		
	MANHOLE PRECAST PULLING CHAMBER PAD		
	CONSTRUCTION DETAIL		
NO:	UCS0028		REV: 4
	1	OF	1