

NOTES:

- A. CONCRETE - 20 MPa. (SEE GCS0005 SECTION 7.0 FOR MATERIAL SPECIFICATIONS), CONCRETE TO BE VIBRATED.
- B. FOR REBUILT POLE LATERAL, NEW CONCRETE SHALL BE DOWELED TO EXISTING CONCRETE.
- C. SPACE BETWEEN DUCTS MAY VARY DEPENDING ON SITE AND POLE CONDITIONS.
- D. EXACT LOCATION OF RISER ON POLE TO BE DETERMINED BY HYDRO OTTAWA IN THE FIELD.
- E. N.I.U. DUCTS TO BE CAPPED AND SECURED BY MECHANICAL MEANS.
- F. CONCRETE CURBS TO BE FORMED USING SONO TUBE AND STRIPPED ONCE CONCRETE IS CURED.
- G. ALL MEASUREMENTS IN MILLIMETRES UNLESS OTHERWISE INDICATED.
- H. ALL PRIMARY LATERALS TO BE CONCRETE ENCASED. SECONDARY LATERALS TO BE CONCRETE ENCASED IN DAMAGE PRONE AREAS AS DIRECTED BY HYDRO OTTAWA.
- I. DUCTS AND TRENCHES MUST BE INSPECTED BY HYDRO OTTAWA BEFORE ANY CONCRETE IS POURED.
- J. AT PRIMARY RISERS, GROUNDING TO BE INSTALLED BY CIVIL CONTRACTOR AS PER OGS0001 OR OGS0007.
- K. MINIMUM CENTER TO CENTER DISTANCE BETWEEN HOLES FOR COMPOSITE POLE SHALL BE GREATER THAN 6 x DIAMETER OF LARGEST HOLE.

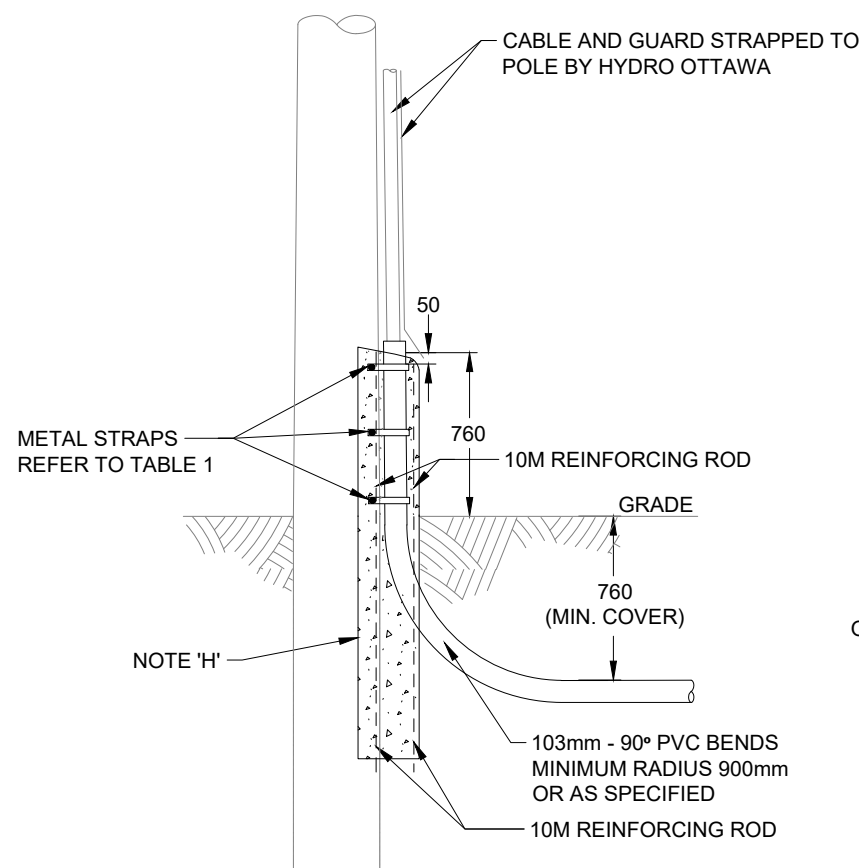


FIGURE 1: POLE LATERAL CONCRETE ENCASED WITH DIRECT BURIED DUCTS

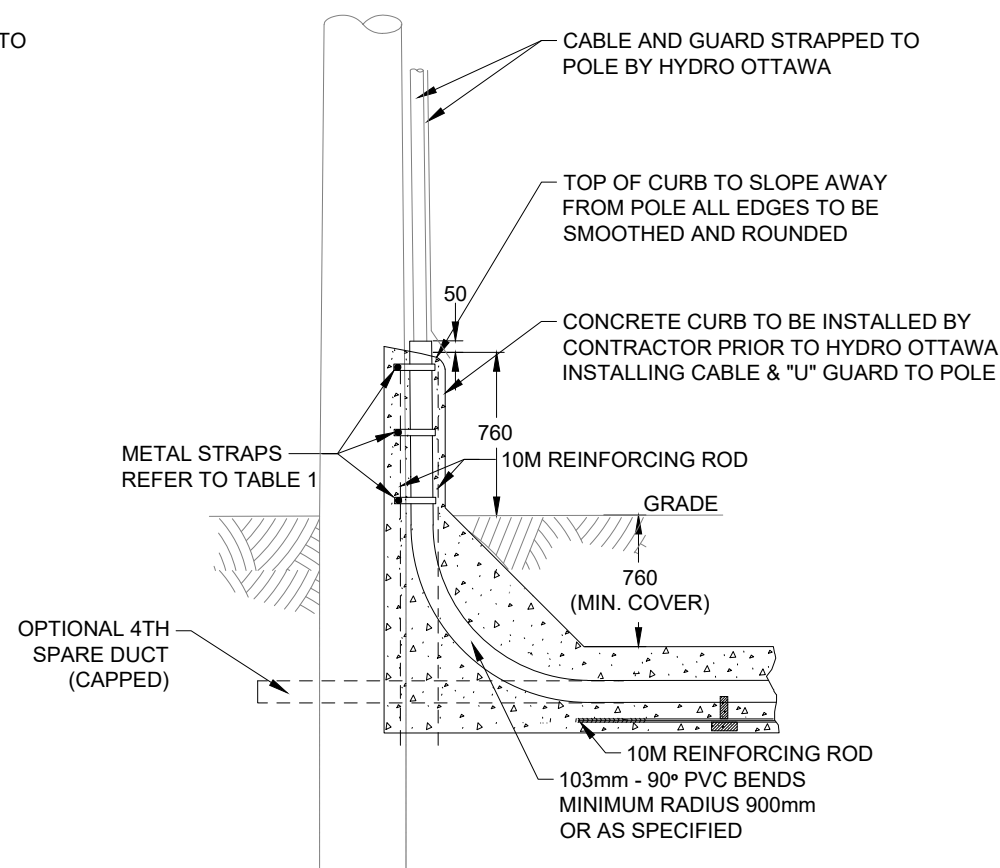


FIGURE 2: POLE LATERAL CONCRETE ENCASED WITH CONCRETE ENCASED DUCTS

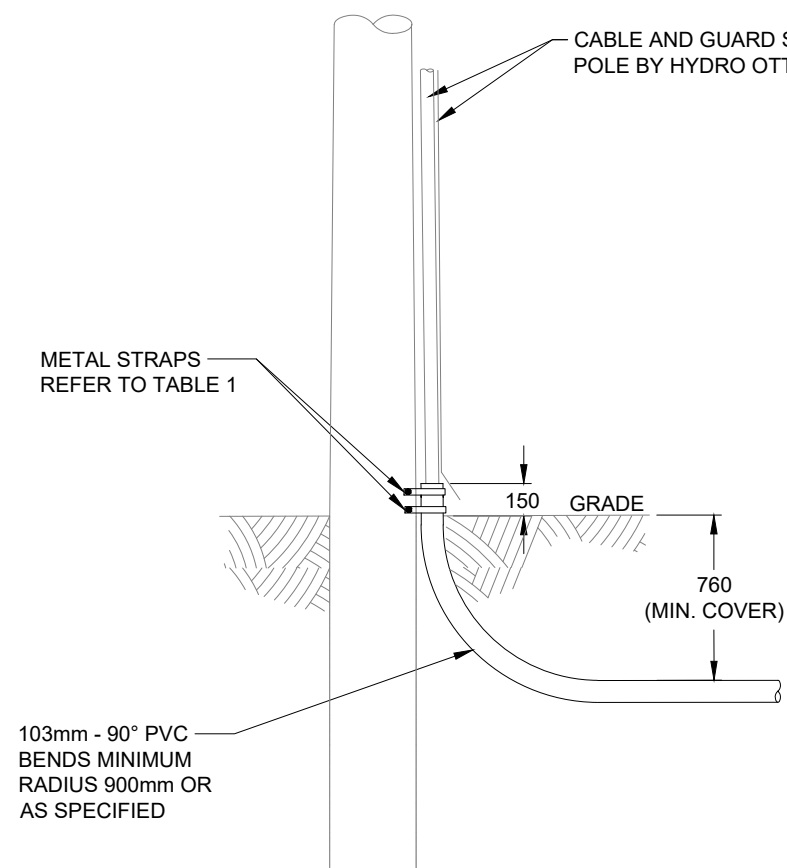


FIGURE 3: POLE LATERAL WITH DIRECT BURIED DUCTS (USE WITH SECONDARY SERVICE ONLY)

	WOOD POLE	COMPOSITE POLE
METAL STRAP		9.5mm x 38mm [3/8" x 1-1/2"] HEX WASHER HEAD, #3 POINT, SELF-DRILLING SCREW
REBAR	13mm x 100mm [1/2" x 4"] LAG SCREW	9.5mm x 63.5mm [3/8" x 2-1/2"] HEX WASHER HEAD, #3 POINT, SELF-DRILLING

TABLE 1: FASTENERS FOR STRAP AND REBAR ON WOOD AND COMPOSITE POLE

REVISIONS		PREP	CHKD	APPD
REV: 10	DATE: 2019-02-05 CHANGE: FIXED TYPO ON FIGURE 'E'	EV	MW	BDH
REV: 11	DATE: 2020-12-01 CHANGE: ADDED FIGURE 3, REMOVED SCALE ON DETAILS	EV	PL	MW
REV: 12	DATE: 2025-05-13 CHANGE: ADDED TABLE 1 TO SHOW OPTION FOR COMPOSITE POLES AND ADDED NOTE 'K'. CHANGED SIZE OF PVC CONDUIT TO 103mm. CHANGED PVC CONDUIT BEND MINIMUM RADIUS TO 900mm.	LG	MS/ RH	MBW

HydroOttawa
WWW.HYDROOTTAWA.COM

PREP: G. MOLNAR
CHKD: C. PROULX
APPD: C. MALONE P.Eng.
DATE: 2007-05-08
SCALE: N.T.S. @ ANSI B

TITLE		NO.	REV.
ENGINEERING SPECIFICATION			
DUCT POLE LATERAL FOR WOOD POLE & COMPOSITE POLE			
CONSTRUCTION DETAIL			
UDS0023		1	12