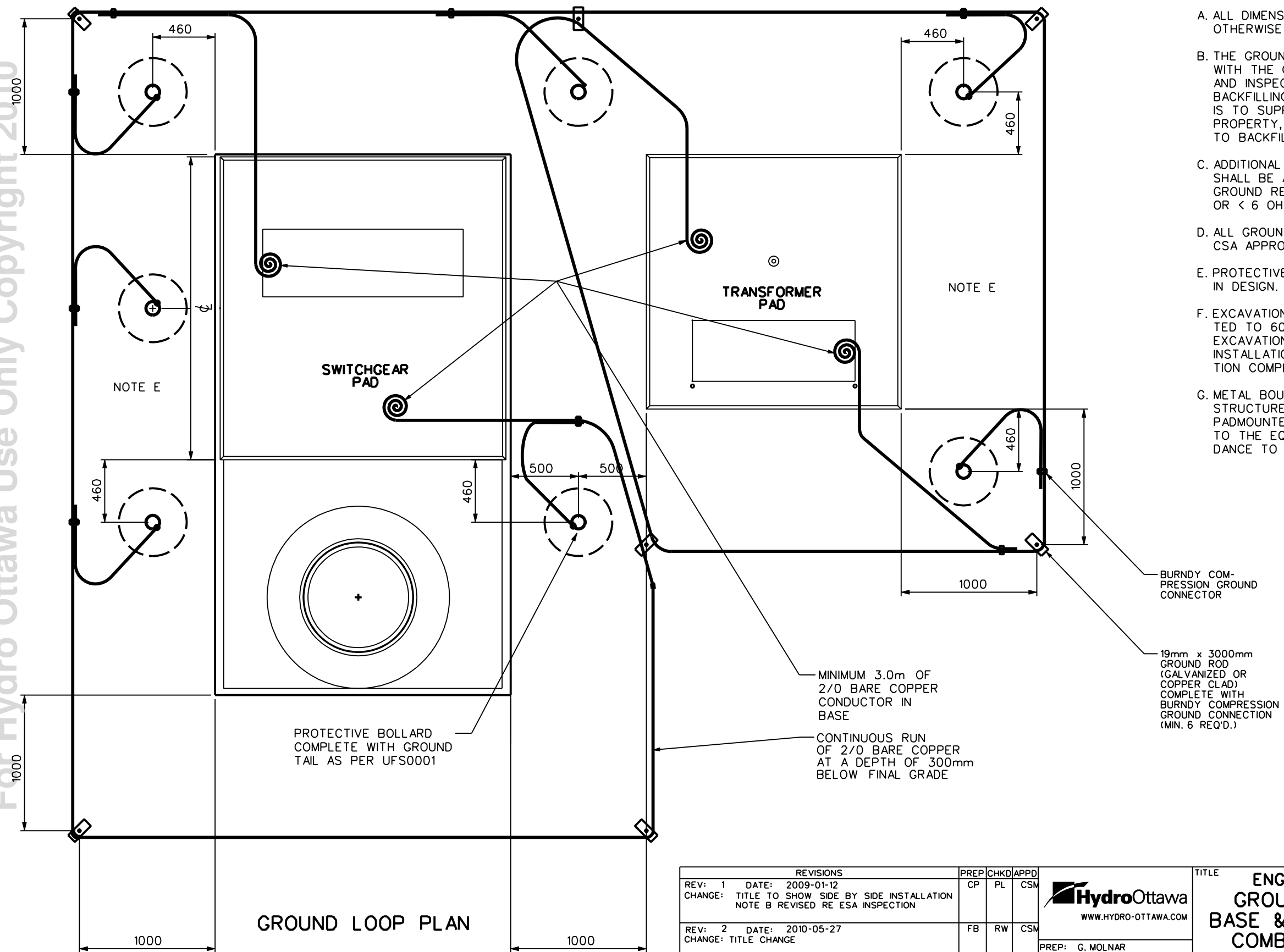


For Hydro Ottawa Use Only Copyright 2010



- NOTES:**
- A. ALL DIMENSIONS IN MILLIMETERS UNLESS OTHERWISE SPECIFIED.
 - B. THE GROUNDING SHALL BE DONE IN ACCORDANCE WITH THE ONTARIO ELECTRICAL SAFETY CODE AND INSPECTED HYDRO OTTAWA PRIOR TO BACKFILLING. WHEN THE ELECTRICAL EQUIPMENT IS TO SUPPLY A CUSTOMER ON PRIVATE PROPERTY, ESA INSPECTION IS REQUIRED PRIOR TO BACKFILLING.
 - C. ADDITIONAL GROUNDING RODS AND/OR PLATES SHALL BE ADDED TO OBTAIN A SATISFACTORY GROUND RESISTANCE OF ≤ 25 OHMS (ISOLATED) OR < 6 OHMS CONNECTED TO SYSTEM NEUTRAL.
 - D. ALL GROUNDING EQUIPMENT TO BE CSA APPROVED.
 - E. PROTECTIVE BOLLARDS REQUIRED AS STATED IN DESIGN.
 - F. EXCAVATION TO BE BACKFILLED AND COMPACTED TO 600mm WITH THE BALANCE OF THE EXCAVATION TO REMAIN OPEN FOR GROUNDING INSTALLATION BY CONTRACTOR. UNTIL INSPECTION COMPLETE.
 - G. METAL BOUNDARY FENCE OR OTHER METAL STRUCTURES WITHIN 2.4m OR LESS OF THE PADMOUNTED EQUIPMENT SHALL BE BOUNDED TO THE EQUIPMENT GROUND LOOP IN ACCORDANCE TO THE OESC AND BULLETIN 36-10-11.

GROUND LOOP PLAN

REVISIONS		PREP	CHKD	APPD
REV: 1	DATE: 2009-01-12	CP	PL	CSM
CHANGE: TITLE TO SHOW SIDE BY SIDE INSTALLATION NOTE B REVISED RE ESA INSPECTION				
REV: 2	DATE: 2010-05-27	FB	RW	CSM
CHANGE: TITLE CHANGE				
REV:	DATE: YYYY-MM-DD			
CHANGE:				

HydroOttawa
WWW.HYDRO-OTTAWA.COM

PREP: G. MOLNAR
CHKD: P. LEMAY
APPD: C. MALONE
DATE: 2008-05-13
SCALE: N.T.S. @ ANSIB

TITLE	ENGINEERING SPECIFICATION GROUNDING TRANSFORMER BASE & SWITCHGEAR MANHOLE COMBINATION SIDE BY SIDE GROUNDING DETAIL	
NO:	UGS0007	REV: 1 OF 1 2