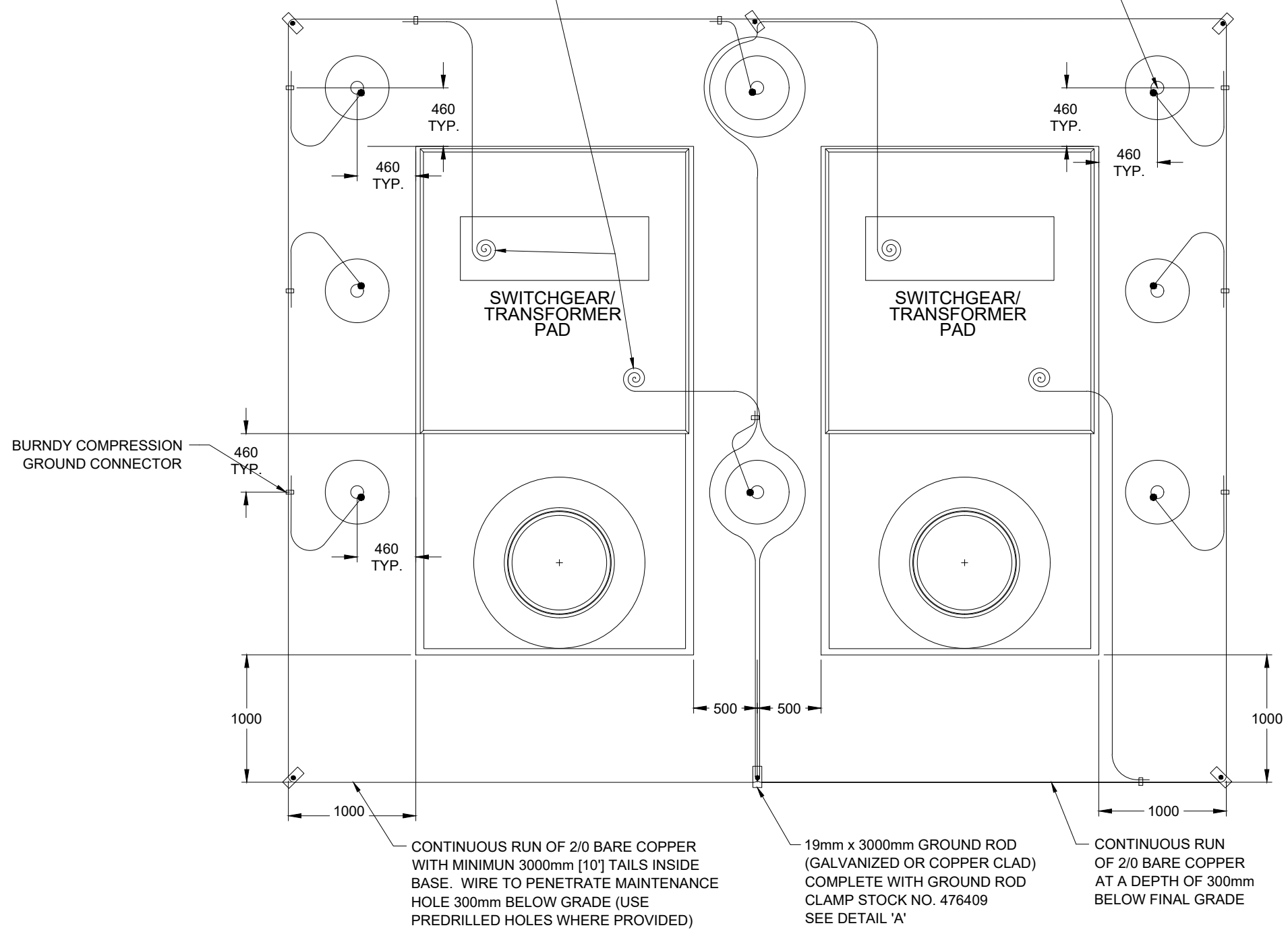


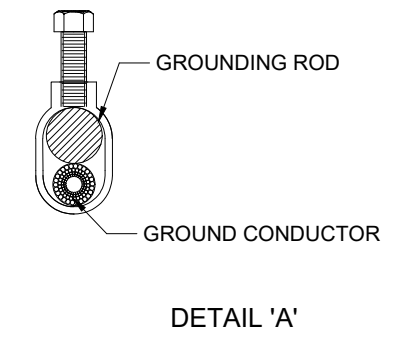
MINIMUM 3000mm [10'] TAILS INSIDE BASE. WIRE TO PENETRATE MAINTENANCE HOLE 300mm BELOW GRADE (USE PREDRILLED HOLES WHERE PROVIDED)

PROTECTIVE BOLLARD COMPLETE WITH GROUND TAIL AS PER UFS0001



**NOTES:**

- A. ALL DIMENSIONS IN MILLIMETERS UNLESS OTHERWISE SPECIFIED.
- B. THE GROUNDING SHALL BE DONE IN ACCORDANCE WITH THE ONTARIO ELECTRICAL SAFETY CODE AND INSPECTED BY HYDRO OTTAWA PRIOR TO BACKFILLING. WHEN THE ELECTRICAL EQUIPMENT IS TO SUPPLY A CUSTOMER ON PRIVATE PROPERTY, ESA INSPECTION IS REQUIRED PRIOR TO BACKFILLING.
- C. ADDITIONAL GROUNDING RODS AND/OR PLATES SHALL BE ADDED TO OBTAIN A SATISFACTORY GROUND RESISTANCE OF  $\leq 25$  OHMS (ISOLATED) OR  $< 6$  OHMS CONNECTED TO SYSTEM NEUTRAL.
- D. ALL GROUNDING EQUIPMENT TO BE CSA APPROVED.
- E. PROTECTIVE BOLLARDS REQUIRED AS STATED IN DESIGN.
- F. EXCAVATION TO BE BACKFILLED AND COMPACTED TO 600 WITH THE BALANCE OF THE EXCAVATION TO REMAIN OPEN FOR GROUNDING INSTALLATION BY CONTRACTOR UNTIL INSPECTION COMPLETE.
- G. METAL BOUNDARY FENCE OR OTHER METAL STRUCTURES WITHIN 2400mm OR LESS OF THE PAD-MOUNTED EQUIPMENT SHALL BE BOUNDED TO THE GROUND LOOP WITH A CONDUCTOR SIZE APPROPRIATE FOR THE AVAILABLE FAULT CURRENT (MIN. 2/0 CU.) AND A SEPARATE CONNECTOR APPROVED BY HYDRO OTTAWA.



LAST SAVED: 2021-05-12 2:53 PM

REVISIONS			PREP	CHKD	APPD	 www.hydroottawa.com	TITLE			
REV: 1	DATE: 2021-05-20	CHANGE: REDUCED DISTANCE BETWEEN MAINTENANCE HOLES	EV	AD	MW		PREP: E. VEH CHKD: A. KHAIRI APPD: M. WYNDHAM P.Eng DATE: 2020-05-20 SCALE: N.T.S. @ ANSI B	ENGINEERING SPECIFICATION GROUNDING TWO 612 EQUIPMENT MAINTENANCE HOLES SIDE BY SIDE CONSTRUCTION DETAIL		
REV: CHANGE:	DATE:							NO: <b>UGS0011</b>	1 OF 1	REV: 1-3
REV: CHANGE:	DATE:									